



# WOOD RODGERS

## MEMORANDUM – DRAFT

**TO:** Mr. Chris Krivanec, P.E., G.E., HDR, Inc.

**FROM:** Jonathan Kors, P.E., PMP 

**DATE:** January 13, 2012

**SUBJECT:** SBFCA, Feather River West Levee Project, Approach for Addressing Existing Levee Encroachments

## INTRODUCTION

In 2010, the Sutter Butte Flood Control Agency (SBFCA) embarked on the Feather River West Levee (FRWL) Project. The project seeks to rehabilitate 44 miles of existing levee along the west bank of the Feather River through Sutter and Butte Counties. A geotechnical assessment of the levees has been completed and the potential mitigation measures to address the deficiencies in each reach have been analyzed by the design team. The alternatives are outlined in detail in the Project Pre-design Formulation Report (PFR) (Reference 1). The design of the project is currently approaching the 65 percent level. For construction, the project is broken up into four contract packages, as described in Reference 2 below. The construction packages, listed in priority order, are as follows: Project C, Project D, Project B, and Project A. The limits of each project are shown on Figure 1. Project C and Project D will be constructed in 2013 and 2014, while Project A and Project B will be constructed in 2014 and 2015.

The levee in each project possesses numerous encroachments which will need to be addressed by the work because they either: a) present a threat to the stability of the levee system, b) do not currently comply with levee encroachment criteria; or c) will be disrupted or otherwise impacted by the levee rehabilitation work. Some of the encroachments have been reviewed and permitted by the Central Valley Flood Protection Board (CVFPB), while others pre-date the establishment of the State Reclamation Board (now the CVFPB), and have been “grandfathered” into the system. The permit status of others remains to be determined. Typical encroachments include pressure pipelines (water supply pipelines from waterside pump stations and drainage pipelines from landside drainage pump stations), gravity drainage pipes, gas lines, telephone utilities, overhead utilities, structural encroachments, and other types and variations as discussed below.

The purpose of this Memorandum is to provide a complete listing of the encroachments (as complete as possible based upon available information), outline the approach to handling project encroachments in general, and outline the approach to handling specific encroachments located within Project areas C and D.

## **REFERENCES**

1. HDR, Wood Rodgers, URS, and MHM, “Pre-design Formulation Report, Feather River West Levee – Segments 1 through 7, Sutter Butte Levee Rehabilitation Program, Sutter and Butte Counties, California,” February 2011.
2. Peterson Brustad, Inc., “Preliminary Construction Ordering Analysis,” July 11, 2011.
3. Wood Rodgers and HDR, 30-Percent Design Drawings, February 2011.

## **MASTER ENCROACHMENTS LIST**

MHM Engineers, the HDR design team member assigned primary design responsibility for utilities disrupted by the project, has developed a Master Encroachments List for identifying all utilities and encroachments on the project. To build the list, MHM performed a field review of the levee, listing all encroachments that were identifiable in the field. The physical location of encroachments identified were captured using GPS equipment. In addition, CVFPB encroachment logs were reviewed by MHM and compared with the encroachments identified in the field. Other sources of information included the U.S. Army Corps of Engineer’s (USACE) Periodic Inspection Report and as-built documentation of various projects located along the alignment. The Master Encroachments List represents the most comprehensive source of information on encroachments impacted by the project. The list continues to be maintained by MHM and is updated as additional information becomes available. The current version of the list is included as Appendix A.

## **ENCROACHMENT NOMENCLATURE AND CATEGORIZATION**

Given the number of encroachments the project must address and the variable nature of how each will be addressed, it was determined that a means to describe and categorize the encroachments was necessary to efficiently coordinate the work with regulatory agencies, utility owners, and the public. For this purpose, Wood Rodgers developed the outline presented on Figure 2. The outline divides all levee encroachments into two categories, those that only encroach on the levee right-of-way, and those that encroach on the levee prism itself. From this distinction, the categories are divided into three subcategories: Structural Encroachments, Wet Utility Encroachments, and Dry Utility Encroachments. These subcategories divide the encroachments in a manner that describes how the project will address them in general. In general, for levee Right-of-Way encroachments, all three categories will not be addressed by the project, but by SBFCA or the local maintaining agency over time. For Levee Prism encroachments, Structure and Wet Utility encroachments will be addressed by the levee improvement contractor. Levee prism dry utility encroachments will be addressed in advance of the levee improvement contractor’s work to clear the way for the levee improvements.

## **PROJECT-SPECIFIC ENCROACHMENTS HANDLING**

Wood Rodgers has reviewed the Master Encroachment List and the construction drawings (Reference 3), and has developed project specific listings for encroachments. The intent of these lists is to inform the reader how each individual encroachment will be handled by the project. The lists incorporate the nomenclature outlined in Figure 2. It is noted that the lists present some encroachments that are treated in a manner different than the general rules described above. In many cases, these encroachments fall into the exceptions described in the notes section of Figure 2. In addition, there are encroachments that either fully comply with all levee safety and encroachment criteria already, or are located in areas of the levee where work is not being performed (no work reaches). These encroachments also generally require treatment in a manner other than general case.

To determine how each specific encroachment is being treated, the Project-specific lists for Project C and Project D are included as Figure 2 and Figure 4, respectively. These lists are color coded to show how each encroachment will be addressed (or not addressed) by the project. Those addressed by the levee rehabilitation contractor during construction are coded blue. Those addressed by a separate contractor (or utility company) prior to the levee rehabilitation contractor are coded red, and those that will be addressed by SBFCA or the local levee maintaining agency (Levee District 1, Levee District 9, or MA 3, 12, or 16) over time, are coded green.

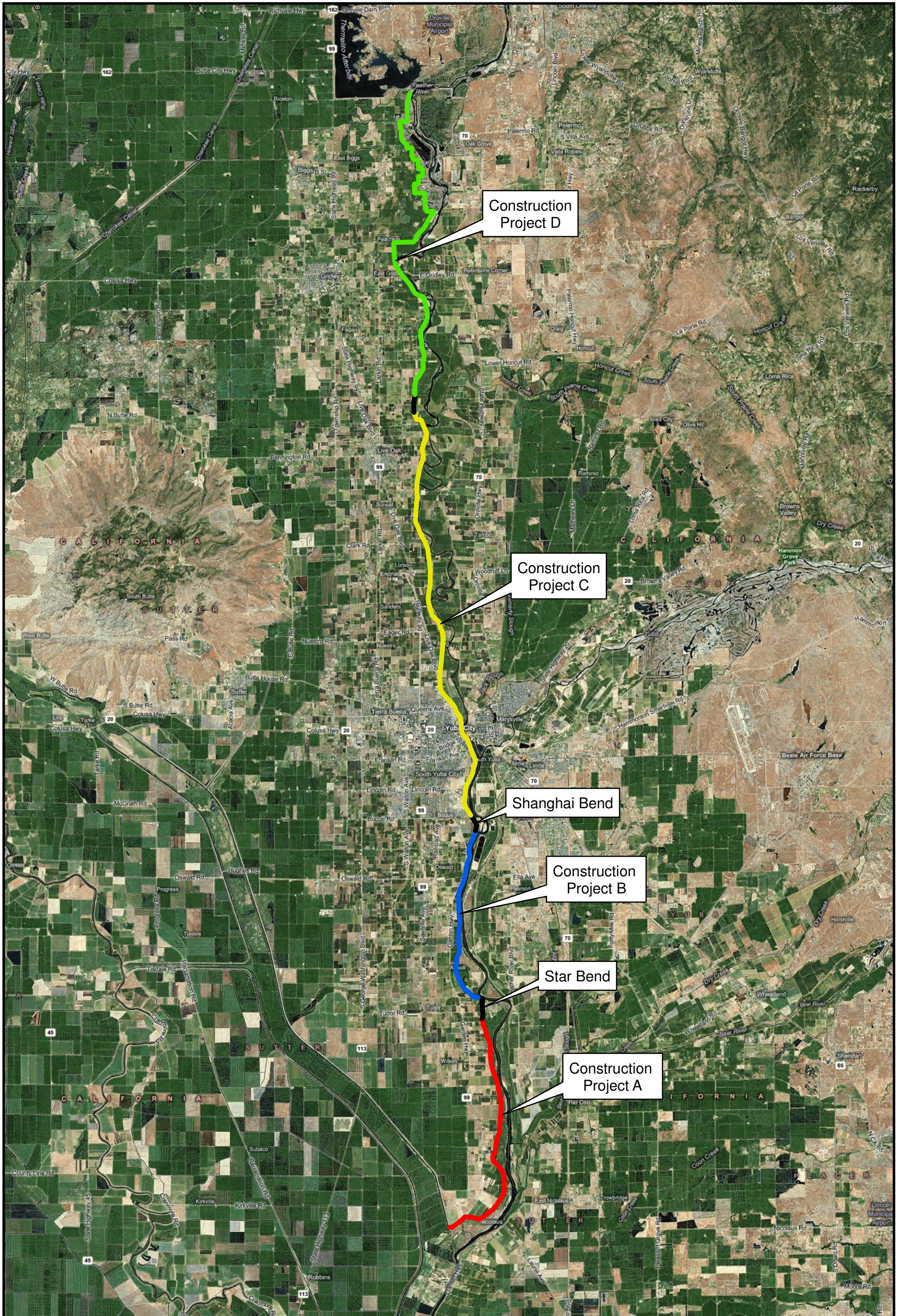
## **CONCLUSIONS AND RECOMMENDATIONS**

It is proposed that these project-specific lists (and this Memorandum) be shared with the Department of Water Resources, CVFPB, and USACE, as well as affected members of the public, to communicate SBFCA's intentions for handling each encroachment encountered on the project. When this coordination has occurred, the design team should begin coordinating with the affected utility owners to advance the design of utility relocations on the project.

The final version of this Memorandum will address the handling of project encroachments for all Projects (A, B, C, and D).

Attachments

# **FIGURES**



Construction Project D

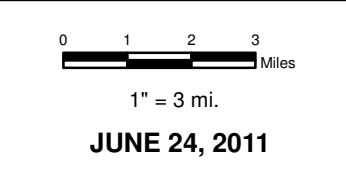
Construction Project C

Shanghai Bend

Construction Project B

Star Bend

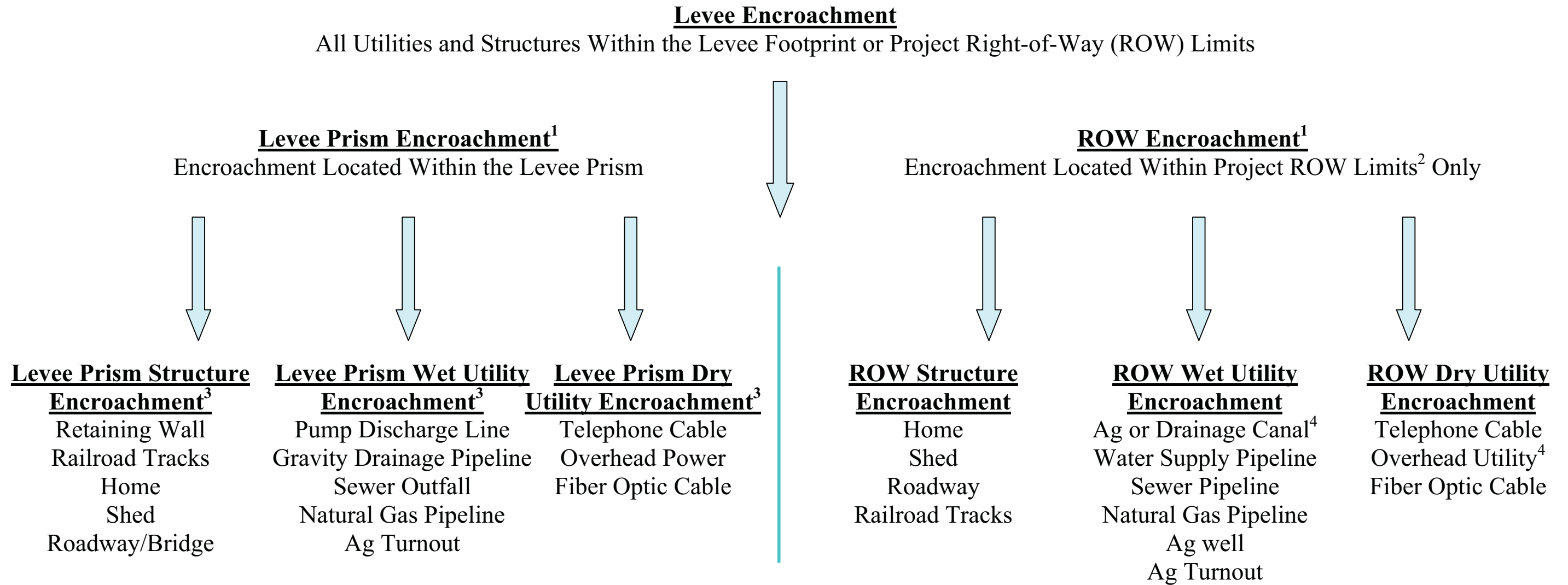
Construction Project A



JUNE 24, 2011



**SUTTER BUTTE FLOOD CONTROL AGENCY  
FEATHER RIVER WEST LEVEE PROJECT  
PROPOSED NOMENCLATURE AND PROJECT APPROACH TO LEVEE ENCROACHMENTS**



**Notes:**

1. All utilities running parallel to the levee, unless located within the levee prism, are considered ROW Encroachments. All utilities running perpendicular to the levee are considered Levee Prism Encroachments, with the exception of overhead utilities, which are **ONLY** a levee prism encroachment if a supporting pole is located within the levee prism.
2. ROW Encroachments are those encroachments that fall within the limits of the Project ROW, 20 feet from landside levee toe, and 15 feet from waterside levee toe.
3. In general, levee prism structure and wet utility encroachments will be relocated or otherwise modified as part of the levee improvement contract. Levee prism dry utility encroachments will be addressed where expeditious or necessary to do so in advance of the levee improvement contract.
4. ROW wet or dry utility encroachments will be relocated prior to the levee improvement contract if they are deemed an impediment to construction access.



**FIGURE 3**  
**SUTTER BUTTE FLOOD CONTROL AGENCY**  
**FEATHER RIVER WEST LEVEE PROJECT**  
**ENCROACHMENTS COORDINATION LIST - PROJECT C (STATION 845+00 TO 1623+86)**

**Color Coding Key-**

Green: Addressed by SBFCA or Local Maintaining Agency over time	Blue: Addressed by the levee rehabilitation contractor
Black: Complies with criteria or is not impacted by levee rehabilitation work.	Red: Addressed in advance of levee rehabilitation

STATION	TYPE	DESCRIPTION	OWNER	UTILITY DISRUPTED BY LEVEE WORK?	REMOVAL, RELOCATION, OR RETROFIT REQUIRED?	PERMITTED?
856+08	LP_WUE	24" seepage interceptor pump discharge line	City of Yuba City	Y	N	Y
856+23	LP_WUE	24" storm drain pump discharge line	City of Yuba City	Y	N	Y
881+41	LP_WUE	6" and 14" relief well pump station	LD1 of Sutter County	Y	N	N
893+84	LP_WUE	12" storm drain pipe	City of Yuba City	Y	N	Y
893+84	LP_WUE	16" pump station discharge pipe (Burns Drive Pump Station)	City of Yuba City	Y	N	Y
894+22	LP_DUE	24 kV underground cable	PG&E	Y	N	Y
894+22	ROW_DUE	Utility pole at levee toe	PG&E	N	Y	Y
899+45	LP_WUE	12" pipe crossing	TBD	Y	N	Y
912+94	LP_DUE	2 (16") gas lines	PG&E	Y	N	N
959+00 to 972+00	ROW_DUE	Overhead powerline, utility poles in close proximity to levee toe	TBD	N	Y	?
971+70	LP_DUE	Utility pole in levee slope	TBD	Y	Y	?
972+50 To 993+50	ROW_SE	Homes and outbuildings along 2nd Street	Various	N	Y	Y
989+40	LP_SE	Outbuilding at 2nd Street	TBD	N	Y	Y
990+55	LP_SE	Outbuilding at 2nd Street	TBD	N	Y	Y
990+75	LP_SE	Outbuilding at 2nd Street	TBD	N	Y	Y
992+45	LP_SE	Outbuilding at 2nd Street	TBD	N	Y	Y
992+75	LP_SE	Outbuilding at 2nd Street	TBD	N	Y	Y
995+75	LP_SE	County Courthouse storage building	Sutter County	N	Y	Y
998+50 to 1000+40	ROW_SE	Buildings at levee toe	TBD	N	Y	?
1003+72	LP_DUE	Utility pole in levee slope	PG&E	N	Y	N
1005+25	ROW_SE	Building at levee toe	TBD	N	Y	?
1006+07	LP_DUE	Utility pole in levee slope	PG&E	Y	Y	Y
1006+93	LP_DUE	Utility and anchor pole	PG&E	Y	Y	Y
1007+46	LP_DUE	Light pole for bike path on levee crown	City of Yuba City	N	N	N
1008+00 To 1025+00	ROW_DUE	Overhead power running parallel to LS levee toe	PG&E	N	Y	Y
1008+00 To 1014+00	LP_SE	Short retaining wall at LS levee slope, holds levee back from power poles	TBD	N	Y	?
1008+75	LS_DUE	Utility pole in waterside levee slope	PG&E	Y	Y	Y
1012+00	ROW_SE	Building at levee toe	TBD	N	Y	?
1014+00 to 1018+00	ROW_SE	Buildings at levee toe	TBD	N	Y	?
1019+00	LP_WUE	4" Pipe abandoned in place above existing cutoff wall	TBD	N	N	N
1019+82	LP_DUE	Light pole for bike path on levee crown	TBD	N	N	N
1020+30	LP_DUE	Emergency telephone call box at levee waterside toe	Pac Bell	N	N	N
1022+15	LP_DUE	Light pole for bike path on levee crown	TBD	N	N	N
1025+00	LP_DUE	Utility pole in levee slope and parallel OH crossing (impacts gap closure)	PG&E	Y	Y	?
1026+78	LP_DUE	10" communications conduit beneath levee and river	TBD	Y	N	Y
1028+09	LP_DUE	Utility pole at levee crown	TBD	N	N	N

**Color Coding Key-**

Green: Addressed by SBFCA or Local Maintaining Agency over time	Blue: Addressed by the levee rehabilitation contractor
Black: Complies with criteria or is not impacted by levee rehabilitation work.	Red: Addressed in advance of levee rehabilitation

STATION	TYPE	DESCRIPTION	OWNER	UTILITY DISRUPTED BY LEVEE WORK?	REMOVAL, RELOCATION, OR RETROFIT REQUIRED?	PERMITTED?
1036+87	LP-DUE	Telephone conduit	Pac Bell	N	N	Y
1037+90	LP-DUE	Telephone conduit	Pac Bell	N	N	Y
1038+50	LP-DUE	8" gas line abandoned in place	TBD	N	Y	N
1043+20	LP_WUE	Gilziser Slough drainage pump station - 4 pipes total	City of Yuba City	N	N	Y
1043+40	LP_WUE	Abandoned Gilziser Slough Sewer Pipe	City of Yuba City	N	N	Y
1054+75	LP_DUE	Emergency telephone call box at levee landside slope	Pac Bell	N	N	N
1055+00	LP_DUE	Light pole for bike path in levee slope	TBD	N	N	N
1073+41	LP_DUE	16-inch gas line	PG&E	N	N	N
1094+40	LP_DUE	3" steel pipe crossing - abandoned	TBD	Y	Y	?
1096+75	LP_WUE	Yuba City raw water intake facility (3 Pipes)	City of Yuba City	Y	N	Y
1097+00	ROW_DUE	Utility pole in close proximity to levee toe	PG&E	N	Y	Y
1107+82	LP_DUE	Utility and Anchor Pole	PG&E	Y	Y	N
1111+50	LP_WUE	Yuba City north area drainage pipe	City of Yuba City	Y	N	Y
1126+00 to 1131+30	ROW_DUE	Overhead powerline, utility poles in close proximity to levee toe	TBD	N	Y	?
1131+00	LP_SE	Union Pacific railroad tracks	UPRR	Y	Y	Y
1131+50	LP_DUE	Fuel line	UPRR	Y	Y	Y
1132+61	LP_DUE	Underground fiber optic cable marker	TBD	Y	Y	?
1135+40	LP_WUE	16" gas line	PG&E	Y	N	Y
1139+25	LP_DUE	Utility pole and anchor pole	PG&E	Y	Y	?
1152+40	ROW_DUE	Twin 110kV utility tower at levee toe	PG&E	N	Y	Y
1170+05	LP_DUE	Utility pole and anchor pole	PG&E	Y	Y	?
1174+00	ROW_WUE	Ag well in close proximity to levee toe	Private	N	Y	?
1174+35	ROW_DUE	Utility pole at levee toe	PG&E	N	Y	N
1176+90	ROW_DUE	Utility pole at levee toe	PG&E	N	Y	N
1179+05	ROW_DUE	Utility pole and guy wire at levee toe	PG&E	N	Y	?
1179+05 to 1201+25	ROW_DUE	Overhead power running parallel to LS levee toe	PG&E	N	Y	?
1180+75	LP_WUE	12" pipe crossing - abandoned	TBD	N	Y	?
1181+00	LP_WUE	3" irrigation pipe crossing - abandoned	TBD	N	Y	?
1182+15	LP_WUE	8" drainage pipe crossing - abandoned	TBD	N	Y	?
1182+75	LP_WUE	20" irrigation pipeline (may not be in place at this time)	Private	Y	N	Y
1200+60	ROW_WUE	Pump station at levee toe	Private	N	Y	N
1200+68	LP_WUE	10" irrigation pipeline - abandoned	Private	Y	N	N
1222+15	ROW_DUE	Utility pole and guy wire at levee toe	PG&E	N	Y	N
1223+80	ROW_DUE	Utility pole at levee toe	PG&E	N	Y	N
1225+90	LP_DUE	Utility pole at levee crown	PG&E	Y	Y	N
1229+43	ROW_WUE	Pump station within 10' of toe	Private	N	Y	Y
1229+43	LP_WUE	16" pump station discharge pipe	Private	Y	Y	Y
1265+55	LP_WUE	18" pump station discharge pipe - abandoned	Private	N	Y	Y
1266+80	ROW_DUE	Utility pole and guy wire at levee toe	PG&E	N	Y	N
1284+91 to 1293+66	ROW_WUE	Concrete lined ditch	Private	N	Y	N
1289+50 to 1291+50	ROW_SE	Farm structures and out buildings in close proximity to levee toe	Private	N	Y	N
1293+66	ROW_DUE	Utility pole and guy wire at levee toe	PG&E	N	Y	

**Color Coding Key-**

Green: Addressed by SBFCA or Local Maintaining Agency over time	Blue: Addressed by the levee rehabilitation contractor
Black: Complies with criteria or is not impacted by levee rehabilitation work.	Red: Addressed in advance of levee rehabilitation

STATION	TYPE	DESCRIPTION	OWNER	UTILITY DISRUPTED BY LEEVE WORK?	REMOVAL, RELOCATION, OR RETROFIT REQUIRED?	PERMITTED?
1298+60 to 1315+02	ROW_WUE	Seepage interceptor trench	LD9	N	N	N
1314+80	LP_WUE	20" pump station discharge pipeline	Private	Y	N	Y
1327+00	ROW_DUE	Utility pole and guy wire at levee toe	PG&E	N	Y	N
1347+06	LP_DUE	Telecommunication line	TBD	Y	Y	N
1375+75 To 1430+50	ROW_WUE	Sutter Extension Sunset Lateral Ditch	Sutter Extension	N	N	Y
1429+80	ROW_WUE	Overhead powerlines, utility poles at waterside levee toe	PG&E	Y	Y	N
1430+50	ROW_SE	Pump station and electrical equipment at landside toe	Sutter Extension	N	N	Y
1430+50	LP_WUE	36", and (2) 60" pump station discharge pipes (Sunset Pump Station)	Sutter Extension	Y	Y	Y
1430+50 To 1490+00	ROW_WUE	Sutter Extension Main Canal	Sutter Extension	N	N	N
1460+65	LP_WUE	6" PVC irrigation pipeline	Private	Y	Y	N
1463+00	ROW_SE	Reisidence in close proximity to levee toe	Private	N	Y	N
1470+00	LP_SE	Ramp to residence on landside at levee crown	Private	Y	Y	N
1470+00	ROW_SE	Residence on pile foundation at landside levee toe	Private	N	Y	N
1473+50	LP_SE	Fence at waterside levee toe	Private	Y	Y	N
1479+98	LP_SE	Private gate across levee	Private	Y	Y	N
1482+00 To 1486+00	ROW_SE	Private residences in close proximity to levee landside toe	Private	N	Y	N
1518+50 To 1520+50	ROW_SE	Large shop structure at landside levee toe	Private	N	Y	N
1520+25	ROW_DUE	Utility pole in levee slope	TBD	N	Y	N
1528+35	LP_WUE	6" steel pipe crossing	Private	Y	Y	Y
1532+86	LP_WUE	6" steel pipe crossing	Private	Y	Y	Y
1536+00	ROW_DUE	Utility pole and guy wire at levee toe	PG&E	N	Y	N
1536+15	LP_WUE	36" pipe crossing	RD 777	Y	Y	Y
1549+70	LP_WUE	12" pipe crossing	TBD	Y	Y	Y
1556+00 To 1558+00	ROW_SE	Residences at landside levee toe	Private	N	Y	N
1556+35	ROW_DUE	Utility pole in close proximity to levee toe	PG&E	N	Y	Y
1556+50	LP_WUE	8" pipe crossing through levee	Private	Y	Y	Y
1585+60	LP_WUE	12" pipe crossing through levee	Private	Y	Y	Y
1610+91	LP_WUE	18" CM pipe crossing	RD 777	Y	Y	Y
1611+50	ROW_SE	Residence at levee waterside toe and driveway at levee crown	Private	Y	Y	N
1610+50 To 1623+86	ROW_WUE	Sutter Butte Main Canal at landside toe	Sutter Extension	Y	N	Y

**FIGURE 4**  
**SUTTER BUTTE FLOOD CONTROL AGENCY**  
**FEATHER RIVER WEST LEVEE PROJECT**  
**ENCROACHMENTS COORDINATION LIST - PROJECT D (STATION 1623+86 TO 2368+00)**

**Color Coding Key-**

Green: Addressed by SBFCA or Local Maintaining Agency over time	Blue: Addressed by the levee rehabilitation contractor
Black: Complies with criteria or is not impacted by levee rehabilitation work.	Red: Addressed in advance of levee rehabilitation

STATION	TYPE	DESCRIPTION	OWNER	UTILITY DISRUPTED BY LEVEE WORK?	REMOVAL, RELOCATION, OR RETROFIT REQUIRED?	PERMITTED?
1635+50	ROW_SE	Farm structure in close proximity to levee toe	Private	N	Y	N
1637+60 to 1638+50	ROW_SE	Farm structure and fence in close proximity to levee toe	Private	N	Y	N
1638+99	LP_WUE	(2) 24" steel pipe crossing	RD 777	N	Y	Y
1651+80	LP_DUE	Utility pole in levee slope	PG&E	N	Y	N
1654+20	LP_DUE	Utility pole at levee toe	PG&E	N	Y	N
1663+80 to 1664+90	ROW_SE	House and outbuilding at landside toe	Private	N	Y	N
1665+30 to 1674+50	ROW_DUE	Utility poles and overhead powerlines at landside toe	PG&E	N	Y	N
1674+50 to 1766+00	ROW_WUE	Sutter Butte Main Canal at landside toe	Sutter Extension	N	N	Y
1675+27	LP_WUE	60"x72" RCP culvert	Butte County Drainage District No.1	N	Y	Y
1675+96	ROW_DUE	Utility pole in levee slope	TBD	N	Y	N
1675+96 to 1705+00	ROW_DUE	Utility poles and overhead powerlines at landside toe	TBD	N	Y	?
1697+95	ROW_DUE	Utility pole at levee toe	AT&T	N	Y	Y
1698+50	ROW_SE	Farm structure in close proximity to levee toe	Private	N	Y	N
1699+62	ROW_WUE	Propane tanks at levee toe	Private	N	Y	N
1706+82 to 1724+82	ROW_SE	Fence at waterside levee toe	Private	N	Y	Y
1722+60 to 1734+10	ROW_DUE	Overhead powerlines, utility poles in waterside slope	TBD	N	Y	N
1728+29	ROW_DUE	Utility pole at levee toe	PG&E	N	Y	Y
1730+00	ROW_SE	Residence in close proximity to levee toe	Private	N	Y	N
1734+00	ROW_DUE	Utility pole at levee toe	TBD	N	Y	?
1738+10	ROW_SE	Residence at waterside levee toe and driveway at levee crown	Private	N	Y	N
1741+32	LP_WUE	16" drainage pipe crossing	Butte County Drainage District No.1	N	Y	N
1756+27	LP_WUE	12" CM pipe crossing - abandoned	TBD	N	Y	N
1765+15	LP_WUE	12" steel pipe crossing	TBD	N	Y	N
1765+33	LP_WUE	12" plastic sleeved concrete irrigation pipe	Private	N	Y	Y
1767+60	LP_WUE	(2) 60" drainage pipes	Butte Water District, Sutter Extension Water District	N	Y	Y
1777+00	LP_WUE	24" CM drainage pipe	TBD	N	Y	Y
1781+50	ROW_SE	Farm structure in close proximity to levee toe	TBD	N	Y	N
1782+50	ROW_DUE	Utility pole at levee toe	TBD	N	Y	?
1784+70	LP_WUE	24" CM drainage pipe crossing	TBD	N	Y	Y
1785+25	LP_WUE	24" CM drainage pipe crossing	TBD	N	Y	Y

**Color Coding Key-**

Green: Addressed by SBFCA or Local Maintaining Agency over time	Blue: Addressed by the levee rehabilitation contractor
Black: Complies with criteria or is not impacted by levee rehabilitation work.	Red: Addressed in advance of levee rehabilitation

STATION	TYPE	DESCRIPTION	OWNER	UTILITY DISRUPTED BY LEVEE WORK?	REMOVAL, RELOCATION, OR RETROFIT REQUIRED?	PERMITTED?
1786+00 to 1787+40	ROW_SE	Residence and outbuilding in close proximity to levee toe	TBD	N	Y	?
1792+96	LP_WUE	24" CM drainage pipe crossing - abandoned	TBD	N	Y	Y
1799+43	LP_WUE	8" irrigation pipe crossing	Private	N	Y	Y
1809+65	LP_WUE	24" CM drainage pipe crossing	TBD	N	Y	Y
1813+70	LP_WUE	24" CM pipe crossing	TBD	Y	Y	Y
1816+63 to 1823+20	ROW_SE	Chain link fence at waterside and landside levee toe	City of Gridley	N	Y	Y
1816+63 to 1823+00	ROW_WUE	Sewer ponds in close proximity to waterside and landside levee toe	City of Gridley	N	Y	N
1818+72	LP_WUE	24" CM pipe crossing	City of Gridley	Y	Y	Y
1823+05	LP_WUE	12" cement coated and lined steel pipe through 24" CM pipe crossing	City of Gridley	Y	Y	Y
1834+41	LP_WUE	12" pipe through 24" CM pipe crossing	TBD	Y	Y	Y
1850+02	LP_WUE	18" cast iron sewer pipe crossing	City of Gridley	Y	Y	Y
1868+17	LP_WUE	18" drainage pipe crossing	Butte County Drainage District	Y	Y	N
1888+52	LP_WUE	8" steel pipe crossing	City of Gridley	Y	Y	Y
1889+97	ROW_DUE	Utility pole at levee toe	PG&E	N	Y	Y
1892+00	ROW_DUE	Utility pole in close proximity to levee toe	PG&E	N	Y	?
1893+70	LP_WUE	3/4" galvanized iron water pipe crossing	TBD	Y	Y	Y
1895+10	ROW_DUE	Utility pole at levee toe	PG&E	N	Y	?
1896+90 to 1900+20	ROW_SE	Residences in close proximity to landside levee toe	TBD	N	Y	?
1900+82 to 1906+60	ROW_DUE	Overhead powerlines, utility poles in landside slope	PG&E	Y	Y	N
1903+00 to 1957+00	ROW_WUE	Sutter Butte Main Canal at landside toe	Sutter Extension	N	N	Y
1903+96	LP_DUE	Guy wire over levee, guy pole at waterside of levee crown	PG&E	Y	Y	N
1906+50	LP_SE	Structure on levee crown	TBD	Y	Y	?
1906+58	LP_DUE	Utility pole at waterside of levee crown	PG&E	Y	Y	Y
1934+52	LP_WUE	36" CM pipe crossing	TBD	Y	Y	N
1947+33	LP_DUE	Utility pole at levee toe, 3" steel conduit crossing	TBD	Y	Y	N
1955+79	LP_SE	Residence on levee crown	Private	Y	Y	Y
1956+00 to 1958+50	LP_SE	Farm structures on levee slopes and at levee toes	TBD	Y	Y	N
1957+10	ROW_DUE	Utility pole on levee slope	TBD	Y	Y	N
1957+90	LP_WUE	24" CM irrigation pipe crossing - abandoned	TBD	Y	Y	Y
1961+11	LP_WUE	(2) 60" CM drainage pipe crossing	TBD	Y	Y	Y
2014+00	LP_WUE	7" steel pipe through 12" steel pipe crossing	Private	Y	Y	Y
2017+80	LP_WUE	22" reinforced concrete encased steel irrigation pipe crossing	TBD	Y	Y	Y
2020+81	ROW_SE	Large steel tank at levee toe	TBD	N	Y	N
2026+00	LP_WUE	12" reinforced concrete encased steel irrigation pipe crossing	TBD	Y	Y	Y
2032+50	LP_WUE	12" reinforced concrete encased steel irrigation pipe crossing	TBD	Y	Y	Y
2038+15	ROW_SE	Farm structure at levee toe	TBD	N	Y	?
2092+20	ROW_DUE	Utility pole in close proximity to levee toe	TBD	N	Y	?
2092+69	LP_DUE	Underground telephone cable crossing	TBD	Y	Y	N
2092+70	LP_WUE	5" irrigation pipe crossing - aluminum pipe	Private	Y	Y	Y
2038+00	ROW_DUE	Utility pole in levee slope	PG&E	N	Y	Y
2138+80	LP_WUE	2" galvanized steel irrigation pipe crossing	Private	N	Y	Y

**Color Coding Key-**

Green: Addressed by SBFCA or Local Maintaining Agency over time	Blue: Addressed by the levee rehabilitation contractor
Black: Complies with criteria or is not impacted by levee rehabilitation work.	Red: Addressed in advance of levee rehabilitation

STATION	TYPE	DESCRIPTION	OWNER	UTILITY DISRUPTED BY LEVEE WORK?	REMOVAL, RELOCATION, OR RETROFIT REQUIRED?	PERMITTED?
2142+00	ROW_DUE	Utility pole at levee toe	PG&E	N	Y	Y
2178+20 to 2185+50	ROW_DUE	Overhead telephone line, utility pole at levee toe	PT&T	N	Y	Y
2178+37	LP_WUE	16" steel irrigation pipe crossing	TBD	N	Y	Y
2185+20	ROW_SE	Farm structures at levee toe	Private	N	Y	?
2201+92	LP_WUE	10" reinforced concrete encased steel pipe crossing - abandoned	TBD	Y	Y	Y
2208+56	ROW_WUE	Ag well in close proximity to levee toe	Private	N	Y	N
2208+56 to 2215+00	ROW_DUE	Overhead powerline, utility pole in close proximity to levee toe	PG&E	N	Y	?
2239+50 to 2241+00	ROW_SE	Residence and outbuilding in close proximity to levee toe	Private	N	Y	N
2239+56	LP_WUE	24" CM drainage pipe crossing	TBD	Y	Y	Y
2243+75	ROW_SE	Outbuilding in close proximity to levee toe	Private	N	Y	N
2244+80	LP_WUE	24" CM drainage pipe crossing	TBD	Y	Y	Y
2248+70	LP_DUE	Underground telephone cable crossing	TBD	Y	Y	N
2250+11	ROW_SE	Concrete structure in levee slope	TBD	N	Y	N
2250+76	LP_WUE	24" CM irrigation pipe crossing	TBD	Y	Y	Y
2256+61	LP_WUE	24" reinforced concrete encased CM irrigation pipe crossing	TBD	Y	Y	Y
2257+15	LP_WUE	24" CM pipe crossing	TBD	Y	Y	Y
2260+90 to 2261+90	ROW_SE	Residence at levee toe	Private	N	Y	?
2260+95	LP_WUE	24" CM pipe crossing	TBD	Y	Y	Y
2261+11	ROW_DUE	Propane tank at levee toe	Private	N	Y	N
2261+56	ROW_DUE	Propane tank at levee toe	Private	N	Y	N
2261+60	ROW_SE	Retaining wall at levee toe	Private	N	Y	N
2262+65	LP_WUE	24" CM drainage pipe crossing	TBD	Y	Y	Y
2264+70 to 2268+45	ROW_DUE	Overhead powerline, utility poles at levee toe	PG&E	N	Y	N
2268+27	LP_WUE	24" reinforced concrete encased CM irrigation pipe crossing	TBD	Y	Y	Y
2274+56	LP_WUE	24" CM pipe crossing	TBD	Y	Y	N
2274+86	LP_WUE	24" reinforced concrete encased CM drainage pipe crossing	TBD	Y	Y	Y
2281+00 to 2282+50	ROW_SE	Residence and driveway in close proximity to levee toe	Private	N	Y	?
2282+25	ROW_SE	Farm structure at levee toe	Private	N	Y	?
2282+80	ROW_DUE	Utility pole at levee toe	PG&E	N	Y	N
2283+42	LP_WUE	24" reinforced concrete encased CM irrigation pipe crossing	TBD	Y	Y	Y
2283+62	LP_WUE	24" CM pipe crossing	TBD	Y	Y	Y
2352+96	LP_WUE	24" CM pipe crossing	TBD	Y	Y	Y
2353+04	LP_WUE	24" CM pipe crossing	TBD	Y	Y	Y
2359+05 to 2359+58	LP_SE	Sutter Butte Head Works structure	Biggs West Gridley Water District	Y	Y	Y
2367+90	LP_DUE	Utility pole in levee crown	TBD	Y	Y	?
2368+00 to 2369+70	LP_SE	Chain link fence on levee crown	TBD	Y	Y	?

# **APPENDIX**



LEVEE ENCROACHMENT LIST

APPENDIX A

Levee Mile	SBFCA Phase	SBFCA Reach	SBFCA STA	Location (NAD 83)		Location (WGS 84)		Encroachment	Proposed Levee Improvement	Required Improvement Work	Type	cover	Elevations (NGVD 1988)			Water Surface Elevation (NGVD 1988)				CVFPB Permit Information			Owner Information		verified	Picture Taken	
				Northing	Easting	Latitude	Longitude						Invert of Pipe	Top of Pipe	Top of Levee	100 Yr	200 Yr	500 Yr	DWR 1957	Permit No.	Require Permittee to Relocate	Year	Name	Address			
			2371+00					Hamilton Bend Levee Transition																			
	D	41	2368+00					End Reach 41																			
1	D	41	2365+00			Not Verified		To construct After bay River Outlet and dredge tailing training dike.	Cutoff Wall		Struc								3930 and 5041	yes, cond 5	1965	Department of Water Resources		no	no		
2	D	41	2359+58	2,291,802.63	6,663,263.33	39°27'16.849"N	121°38'24.675"W	Old Sutter Butte Head Works Levee North	Cutoff Wall	Appears the structure will need to be removed and levee constructed through the area. MHM will include demo plan and levee civil will prepare plans for new levee.	IR(G)			138.88							part of orig O&M 1955	Biggs West Gridley Water District	1713 West Gridley Road, Gridley, CA	yes	yes		
3	D	41	2359+57	2,291,800.70	6,663,265.27	39°27'16.830"N	121°38'24.650"W	Old Sutter Butte Head Works North	Cutoff Wall		IR(G)			135.34	130.32	131.97	137.27	132.14			part of orig O&M 1955	Biggs West Gridley Water District	1713 West Gridley Road, Gridley, CA	yes	yes		
4	D	41	2359+07	2,291,752.42	6,663,249.77	39°27'16.353"N	121°38'24.550"W	Old Sutter Butte Head Works South	Cutoff Wall		IR(G)			135.30							part of orig O&M 1955	Biggs West Gridley Water District	1713 West Gridley Road, Gridley, CA	yes	yes		
5	D	41	2359+05	2,291,752.84	6,663,244.36	39°27'16.358"N	121°38'24.919"W	Old Sutter Butte Head Works Levee South	Cutoff Wall		IR(G)			138.69							part of orig O&M 1955	Biggs West Gridley Water District	1713 West Gridley Road, Gridley, CA	yes	yes		
	D	40/41	2359+00					Reach 40/41 Transition																			
6	D	40	2352+90	2,291,166.67	6,663,263.09	39°27'10.563"N	121°38'24.710"W	12 kv overhead electrical power line crossing	Cutoff Wall		EL	OH		139.23									Pacific Gas & Electric	One Tower, Spear Tower, San Francisco, CA 94105	yes	yes	
7	D	40	2352+80	Not Verified		Not Verified		24 Inch CM pipe through levee. Concrete saddle and apron with Calco Slide gate.	Cutoff Wall	Not sure if the pipeline meets the elevation requirement over 200 year WSEL. The type of pipe may or may not meet Title 23. Could not find, need to nothole to verify.	SD(G)			122.7 (USED)			130.08	131.75	137.03	131.86	pre-1955		part of orig O&M 1955		no	no	
8	D	40	2345+79	2,290,475.75	6,663,109.16			10 inch Iron Pipe through levee that appears to be abandoned	Cutoff Wall	Not sure if the pipeline meets the elevation requirement over 200 year WSEL. The type of pipe may or may not meet Title 23. Could not find, need to nothole to verify.	IR(P)	12.7	126.37	127.20	139.90	129.30	130.94	136.34	131.14					yes	yes		
	D	39/40	2319+00					Reach 39/40 Transition																			
9	D	39	2312+05	Not Verified		Not Verified		24 Inch CM pipe through levee. Concrete saddle and apron with Calco automatic drainage gate.	Cutoff Wall	Not sure if the pipeline meets the elevation requirement over 200 year WSEL. The type of pipe may or may not meet Title 23. Could not find, need to nothole to verify.	SD(G)			124.0 (USED)			124.25	125.63	132.37	127.85	pre-1955		part of orig O&M 1955		no	no	
	D	38/39	2303+00					Reach 38/39 Transition																			
10	0.0-0.3	D	38	2301+00	Not Verified	Not Verified		To excavate dredger tailings from the right bank of the Feather River. The tailings are to be excavated from an area approximately 100 feet landward of the landward levee toe. The application was deemed incomplete on 8.4.98.	Cutoff Wall		Struc										16006	no issued	1992	Mathews Ready-mix, Inc	P.O. Box 386, Gridley, CA 95948		
	D	37/38	2290+00					Reach 37/38 Transition																			
	D	37	2285+00					Maintenance Area 07 / Hamilton Bend Levee Transition																			
1	11.68	D	37	2283+65	2,285,659.90	6,661,586.51		24 Inch CM pipe through levee. Concrete saddle and apron with Calco automatic drainage gate.	Cutoff Wall	Not sure if the pipeline meets the elevation requirement over 200 year WSEL. The type of pipe may or may not meet Title 23. Could not find, need to nothole to verify.	SD(G)	15.0	115.70	117.70	132.70	121.35	122.59	128.94	126.23	pre-1955		part of orig O&M 1955		no	no		
2	11.68	D	37	2283+44	2,285,640.25	6,661,593.28	39°26'15.978"N	121°38'46.270"W	24 Inch reinforced concrete encased CM irrigation pipe through levee. Slide Gate in 36 inch CM pipe riser on the waterside slope. 8 inch Irrigation pipe ran through existing pipe, pipe ends not exposed	Cutoff Wall	IR(P)	17.3	113.40	115.40	132.70	121.34	122.58	128.93	126.22	pre-1955		part of orig O&M 1955		yes	yes		
3	11.66	D	37	2282+57	2,285,558.49	6,661,622.35	39°26'15.196"N	121°38'45.906"W	12 kv overhead electrical power line crossing	Cutoff Wall	EL	OH		132.97									Pacific Gas & Electric	One Tower, Spear Tower, San Francisco, CA 94105	yes	yes	
4	11.52	D	37	2274+95	2,284,812.04	6,661,741.46	39°26'07.730"N	121°38'44.408"W	24 Inch CM pipe through levee. Automatic drainage gate on waterside outlet, headwall on land side inlet. Both ends of the pipe have been cleared to operate.	Cutoff Wall	SD(G)	17.8	112.30	114.30	132.11	120.83	122.04	128.24	125.98	pre-1955		part of orig O&M 1955		yes	yes		
5	11.52	D	37	2274+86	2,284,802.77	6,661,742.00		24 Inch CM reinforced concrete encased drainage pipe through levee. Slide Gate in 36 inch CM pipe riser on the waterside slope. Neither pipe end located or exposed.	Cutoff Wall	Not sure if the pipeline meets the elevation requirement over 200 year WSEL. The type of pipe may or may not meet Title 23. Could not find, need to nothole to verify.	SD(G)	21.8	108.30	110.30	132.10	120.83	122.04	128.24	125.97	pre-1956		part of orig O&M 1956		no	no		
6	11.39	D	37	2268+27	2,284,144.45	6,661,772.03	39°26'01.214"N	121°38'44.047"W	24 Inch reinforced concrete encased CM irrigation pipe through levee. Slide Gate in 36 inch CM pipe riser on the waterside slope with waterside outlet broken off and plugged.	Cutoff Wall	IR(G)	18.4	111.30	113.30	131.70	120.44	121.62	127.71	125.78	pre-1955		part of orig O&M 1955		yes	yes		
7	11.33	D	37	2265+50	2,283,868.22	6,661,784.45	39°25'58.464"N	121°38'43.916"W	12 kv overhead electrical power line crossing	Cutoff Wall	EL	OH		131.39									Pacific Gas & Electric	One Tower, Spear Tower, San Francisco, CA 94105	yes	yes	
8	11.28	D	37	2262+69	2,283,587.31	6,661,797.10	39°25'55.665"N	121°38'43.763"W	24 Inch CM drain pipe through levee with landside headwall. Automatic Drainage Gate on the waterside end with splash pan and saddle headwall.	Cutoff Wall	SD(G)	18.0	110.85	112.85	130.80	120.21	121.39	127.42	125.62	pre-1955		part of orig O&M 1955		yes	yes		
9	11.27	D	37	2262+14	2,283,532.17	6,661,800.26	39°25'55.162"N	121°38'43.739"W	Road Across Levee North	Cutoff Wall	Road			131.10									County of Butte	7 County Center Drive, Oroville, CA 95965	yes	yes	
10	11.27	D	37	2261+90	2,283,505.66	6,661,801.21	39°25'54.900"N	121°38'43.729"W	Road Across Levee South	Cutoff Wall	Road			131.20									County of Butte	7 County Center Drive, Oroville, CA 95965	yes	yes	
11	11.26	D	37	2261+56	2,283,474.37	6,661,801.73	39°25'54.590"N	121°38'43.723"W	Propane tank at landside toe	Cutoff Wall				130.73											yes	yes	
12	11.25	D	37	2261+11	2,283,429.45	6,661,804.82	39°25'54.146"N	121°38'43.686"W	Propane tank at landside toe	Cutoff Wall				130.31											yes	yes	
13	11.24	D	37	2260+55	2,283,374.22	6,661,809.27		24 Inch CM pipe through levee. Concrete saddle and apron with Calco automatic drainage gate.	Cutoff Wall	Not sure if the pipeline meets the elevation requirement over 200 year WSEL. The type of pipe may or may not meet Title 23. Could not find, need to nothole to verify.	SD(G)	18.1	110.20	112.20	130.30	120.17	121.35	127.37	125.57	pre-1955		part of orig O&M 1955		no	no		
	D	36/37	2259+00					Reach 36/37 Transition																			
14	11.18	D	36	2256+94	2,283,026.77	6,661,894.43		24 Inch CM pipe through levee. Concrete saddle and apron with Calco automatic drainage gate.	Cutoff Wall	Not sure if the pipeline meets the elevation requirement over 200 year WSEL. The type of pipe may or may not meet Title 23. Could not find, need to nothole to verify.	SD(G)	17.1	111.00	113.00	130.10	120.10	121.29	127.29	125.47	pre-1955		part of orig O&M 1955		no	no		
15	11.17	D	36	2256+71	2,283,007.16	6,661,905.92	39°25'49.881"N	121°38'42.345"W	24 Inch reinforced concrete encased CM irrigation pipe through levee. Slide Gate in 36 inch CM pipe riser on the waterside slope. Neither pipe end located or exposed.	Cutoff Wall	IR(G)	19.1	109.00	111.00	130.10	120.09	121.29	127.29	125.46	pre-1955		part of orig O&M 1955		yes	yes		
16	11.17	D	37	2270+00			Not Verified	To construct a 50 x 100 foot walnut processing building in the right overflow area of the Feather River	Cutoff Wall		Struc									12787	yes, cond. 13	1979	Rio Bonito Ranch	Route 1, Box 111, Biggs, CA 95917	no	no	
17	11.05	D	36	2250+76	2,282,559.01	6,662,297.09	39°25'45.524"N	121°38'37.456"W	24 Inch CM irrigation pipe through levee. Slide gate in 36 inch CM pipe riser on the waterside slope and slide gate in 48 inch RCP standpipe on landside toe.	Cutoff Wall	IR(G)	16.4	111.50	113.50	129.90	119.97	121.18	127.15	125.29	pre-1955		part of orig O&M 1955		yes	yes		
18	11.04	D	36	2250+10	2,282,509.99	6,662,339.63	39°25'45.038"N	121°38'36.916"W	Concrete structure in waterside slope of levee Removed	Cutoff Wall	?			130.18											yes	yes	



LEVEE ENCROACHMENT LIST

APPENDIX A

Levee Mile	SBFCA Phase	SBFCA Reach	SBFCA STA	Location (NAD 83)		Location (WGS 84)		Encroachment	Proposed Levee Improvement	Required Improvement Work	Type	cover	Elevations (NGVD 1988)			Water Surface Elevation (NGVD 1988)				CVFPB Permit Information			Owner Information		verified	Picture Taken
				Northing	Easting	Latitude	Longitude						Invert of Pipe	Top of Pipe	Top of Levee	100 Yr	200 Yr	500 Yr	DWR 1957	Permit No.	Require Permittee to Relocate	Year	Name	Address		
19	11.02	D	36	2248+30	2,282,389.90	6,662,473.42	39°25'44.066"N	121°38'35.638"W	Underground telephone cable through levee at south side of paved road over levee.	Cutoff Wall					130.10	119.92	121.14	127.10	125.23						yes	yes
20	10.96	D	36	2245+52	2,282,232.77	6,662,702.59			24 Inch CM drain pipe through levee. Automatic Drainage Gate on the waterside end buried and not located.	Cutoff Wall		15.1	112.99	114.99	130.10	119.87	121.09	127.04	125.15	pre-1955		part of orig O&M 1955			no	no
21	10.84	D	36	2239+66	2,281,676.83	6,662,766.65	39°25'36.688"N	121°38'31.483"W	24 Inch CM drain pipe through levee. Concrete headwall at both toes and automatic Drainage Gate in 36 inch concrete standpipe on berm. House near land toe, land end not located it could possibly be in house back yard.	Cutoff Wall		15.8	111.90	113.90	129.70	119.75	120.99	126.91	124.98	pre-1955		part of orig O&M 1955			yes	yes
	10.29	D	35/36	2224+00					Reach 35/36 Transition																	
22	10.15	D	35	2216+71	2,280,223.64	6,663,692.84	39°25'22.387"N	121°38'19.785"W	12 Kv power line crossing of levee. One pole 215 feet water ward of levee toe with overhead clearance of 27 feet.	Cutoff Wall										6221	yes, cond 5	1968	Pacific Gas & Electric	One Tower, Spear Tower, San Francisco, CA 94105	yes	yes
23	10.24	D	35	2208+56	2,279,495.37	6,664,025.97	39°25'15.175"N	121°38'15.577"W	Pump on the landside setup to pump only to land side of levee, no standpipe, no permanent pipe over levee	Cutoff Wall					125.50	118.36	119.67	125.53	122.99					yes	yes	
24	10.12	D	35	2201+87	2,279,440.81	6,664,690.55	39°25'14.617"N	121°38'07.169"W	Abandoned 10 inch reinforced concrete encased steel irrigation pipe through levee. Slide gate in 24 inch concrete standpipe at the waterside toe. Pipe ends not located or exposed.	Cutoff Wall		13.1	111.97	112.80	125.90	117.36	118.68	124.42	122.10	pre-1955		part of orig O&M 1955			yes	yes
25	9.82	D	35	2182+45	2,277,864.11	6,665,182.53	39°24'59.006"N	121°38'00.922"W	Power pole at land side toe	Cutoff Wall															yes	yes
		D	34/35	2182+00					Reach 34/35 Transition																	
26	9.67 - 9.81	D	34	2178+48	2,277,831.66	6,665,565.26	39°24'58.671"N	121°37'56.047"W	To replace an existing buried telephone cable with aerial cable crossing of the right bank of the Feather River at the end of Cherry Road. The aerial telephone will be placed on an existing PG&E poles. Due to two right angle bends in the levee, the overhead cable will cross the levee crown at two locations within the extension	2138+00 to 2182+00, No Rehabilitation Required					125.00					9076 and 12663	yes, cond 13	1979 and 1979	Pacific Telephone and Telegraph Company	1426 Howe Avenue, Suite 50, Sacramento, CA 95825	no	no
27	9.66	D	34	2178+39	2,277,825.68	6,665,571.75	39°24'58.571"N	121°37'56.003"W	16 inch steel irrigation pipe through levee. Slide gate in 36 inch concrete standpipe at the waterside toe. Concrete distribution box at the landside toe.	2138+00 to 2182+00, No Rehabilitation Required		13.2	110.07	111.40	124.60	114.66	115.80	120.42	119.64	pre-1955		part of orig O&M 1955			yes	yes
28	8.75	D	34	2138+22	2,275,157.46	6,664,140.19	39°24'32.295"N	121°38'14.342"W	Power line crossing of levee and guy wire	2122+00 to 2138+00, Cutoff Wall										5865	yes, cond 5	1969	Pacific Gas & Electric	One Tower, Spear Tower, San Francisco, CA 94105	yes	yes
29	8.73	D	34	2127+33	Not Verified		Not Verified		To authorize an existing 2 inch irrigation pipeline through the right bank of the Feather Rivers. Removable pipe over levee found at 2120+50	2122+00 to 2138+00, Cutoff Wall		2.0	122.1 (USED)		109.61	110.62	114.58	113.41	14200	yes, cond 13	1985	Clinton W. Moffitt	2770 Larkin Road, Biggs, CA 95917	no	no	
	8.41	D	33/34	2122+00					Reach 33/34 Transition																	
30	8.10	D	33				Not Verified		To plant a Kiwi vineyard parallel to the direction of river flow with a minimum row spacing of 4.9 meters and 2.4 meters spacing within each row.	Cutoff Wall										13504	yes, cond 13	1982	Benjamin L. Couberly	7240 Suretre Lane, Loomis, CA 95650	no	no
31	7.85	D	33	2092+90	2,272,415.47	6,665,972.41	39°24'04.914"N	121°37'51.140"W	Underground telephone cable through levee on north side of paved road over the top of the levee.	Cutoff Wall					120.52	109.60	110.60	114.56	113.40						yes	yes
32	7.85	D	34	2092+37					Power line crossing of levee on south side of road	2122+00 to 2138+00, Cutoff Wall															yes	yes
33	7.81	D	33	2092+20	Not Verified		Not Verified		5" aluminum irrigation pipe through levee. Pipeline has been removed	Cutoff Wall										5520	permit denied	1966	John Kucek	1118 Almond Avenue, Biggs, CA 95917	n/a	n/a
34	7.69	D	33	2084+03	2,271,531.48	6,666,011.72			5" x 0.25" wall steel irrigation line through levee	Cutoff Wall		2.2	116.28	116.70	118.90	108.96	109.98	113.96	112.72	17895 and 17895-A	yes, cond 20	2005	John Kucek	1118 Almond Avenue, Biggs, CA 95917	no	no
35	6.75	D	33	2037+15	2,268,425.64	6,666,455.64	39°23'25.666"N	121°37'45.190"W	115 kv pole crossing of levee.	Cutoff Wall										12901		1980	Pacific Gas & Electric	One Tower, Spear Tower, San Francisco, CA 94105	yes	yes
36	6.88	D	33	2032+90	Not Verified		Not Verified		12 inch reinforced concrete encased steel irrigation pipe through levee. Slide gate in 24 inch concrete standpipe at waterside toe.	Cutoff Wall					105.35	106.23	109.77	109.67	pre-1955		part of orig O&M 1955			no	no	
37	6.74	D	33	2026+40	Not Verified		Not Verified		12 inch reinforced concrete encased steel irrigation pipe through levee. Slide gate in 24 inch concrete standpipe at waterside toe.	Cutoff Wall					104.72	105.59	109.10	109.36	pre-1955		part of orig O&M 1955			no	no	
38	6.63	D	33	2020+81	2,267,049.65	6,665,590.75	39°23'12.100"N	121°37'56.278"W	Large steel tank on land side at toe of levee	Cutoff Wall															yes	yes
39	6.59	D	33	2018+00			Not Verified		To retain a spur levee between the right bank project levee and the bank of the low water channel, a distance of approximately 600 feet. The spur levee is normal to the project levee and to the direction of the overbank flow. The levee varies from 3 to 6 feet above ground surface	Cutoff Wall										9626	no	1974	Jack Mariani Farms, Inc.	25000 El Camino Real, Santa Clara, CA 95051	no	no
40	6.58	D	33	2017+78	2,266,812.83	6,665,317.53	39°23'09.770"N	121°37'59.770"W	22 inch reinforced concrete encased steel irrigation pipe through levee. Slide gate in 36 inch concrete standpipe at waterside toe.	Cutoff Wall					113.60	104.08	104.92	108.35	109.09	pre-1955		part of orig O&M 1955			yes	yes
41	6.34	D	33	2005+20	Not Verified		Not Verified		7 inch steel pipe sleeved through the existing 12 inch steel pipe through levee. The annular space between the two pipes is plugged with concrete on both ends. Slide gate in concrete risers on both ends.	Cutoff Wall					103.36	104.17	107.50	108.61	Pre-1955 and 4591	yes, cond 5	Pre-1955 for original pipe and 1965 for sleeve	Jack Mariani Farms, Inc.	Route 1, Box 54, Larkin Road, Biggs, CA 95917	no	no	
42	6.14	D	33	2007+00			Not Verified		To construct 1255 feet of spur levee from west project levee to the Feather River west bank.	Cutoff Wall									4963	yes, cond 5	1974	Boeger River Ranch	Route 1, Box 265, Gridley, CA	no	no	
43	5.10-6.15	D	33	1995+00			Not Verified		To authorize an existing walnut orchard on the right bank overflow area of the Feather River/	Cutoff Wall									15613	no	1991	William H. Cilker	16075 Matilija Drive, Los Gatos, CA 95030			
	5.93	D	32/33	1989+00					Reach 32/33 Transition																	
44	5.60-6.15	D	32	1970+00			Not Verified		To interplant trees in an existing pear orchard on the right bank overflow area of the Feather River	Cutoff Wall									6004 and 6053	yes, cond 5	1968	W.H. Cilker	16075 Matilija Drive, Los Gatos, CA 95030	no	no	
45	5.50	D	32	1961+03	2,264,727.12	6,660,794.20	39°22'49.332"N	121°38'57.487"W	Two 60 inch CM drainpipes through levee. Automatic drainage gates on waterside end and concrete headwalls on both ends.	Cutoff Wall					110.70	101.68	102.54	105.86	106.12	pre-1955		part of orig O&M 1955			yes	yes
	5.38	D	31/32	1958+00					Reach 31/32 Transition																	
46	5.44	D	31	1957+75	2,264,471.77	6,660,429.36	39°22'46.822"N	121°39'02.146"W	To construct a earthen Berm, equipment storage shed, labor apartment and multiple-purpose building on the landward berm of the levee. The 32 foot by 34 foot building will be located adjacent to an existing shop building. The proposed building will be located on an existing earth fill located on landward slope of the levee and will be 10 feet from the toe of the levee.	Cutoff Wall					110.67					5392 and 5709, 5709A	yes, cond 5	1966 and 1967	William H. Cilker	16075 Matilija Drive, Los Gatos, CA 95030	yes	yes



LEVEE ENCROACHMENT LIST

APPENDIX A

Levee Mile	SBFCA Phase	SBFCA Reach	SBFCA STA	Location (NAD 83)		Location (WGS 84)		Encroachment	Proposed Levee Improvement	Required Improvement Work	Type	cover	Elevations (NGVD 1988)			Water Surface Elevation (NGVD 1988)				CVFPB Permit Information			Owner Information		verified	Picture Taken				
				Northing	Easting	Latitude	Longitude						Invert of Pipe	Top of Pipe	Top of Levee	100 Yr	200 Yr	500 Yr	DWR 1957	Permit No.	Require Permittee to Relocate	Year	Name	Address						
47	5.40	D	31	1956+20	2,264,512.56	6,660,422.66			24 inch CM irrigation pipe through levee. Slide gate in concrete riser pipe on landside berm. Pipe runs under mobile home.	Cutoff Wall			IR(G)	11.0	97.00	99.00	110.00	101.64	102.50	105.81	105.96	pre-1955		part of orig O&M 1955			no	no		
48	5.40	D	31	1956+10					Modular Home Located on the Levee Top	Cutoff Wall																				
49	5.10	D	31	1947+33	2,263,626.47	6,660,477.81	39°22'38.465"N	121°39'01.570"W	Service pole 10' from water side toe with 3" steel conduit through top of levee	Cutoff Wall							110.18										yes	yes		
50	4.98	D	31	1934+54	2,262,349.20	6,660,521.29	39°22'25.839"N	121°39'01.079"W	24 inch steel pipe through levee. Slide gate in concrete box on the water side slope. (Corps list pipe as 36 inch CMP)	Cutoff Wall			SD(G)	17.5	89.90	91.90	109.40	101.42	102.28	105.57	105.14						yes	yes		
51	4.44	D	31	1906+58			Not Verified		To authorize construction of stream gauging station on the right bank levee of the Feather River	Cutoff Wall			Struc				109.76					5730	yes, cond 5	1967	Department of Water Resources	P.O. 9137, Sacramento, CA 95816	no	no		
52	4.44	D	31	1906+58	2,259,711.16	6,661,315.13	39°21'59.734"N	121°38'51.100"W	12 kv Pole line over levee. One pole 10 foot landward and one pole on levee for DWR and service electrical to water side building	Cutoff Wall			EL	OH			109.76						5857	yes, cond 5	1967	Pacific Gas & Electric	One Tower, Spear Tower, San Francisco, CA 94105	yes	yes	
53	4.32	D	31	1903+96	2,259,482.14	6,661,442.38	39°21'57.465"N	121°38'49.491"W	To extend 3 phase No. 4 ACSR 12 kv pole line across right bank levee of the Feather River. Line to provide power to new pump for Roy Mathews	Cutoff Wall			EL	OH			107.72						5351	yes, cond 5	1966	Pacific Gas & Electric	One Tower, Spear Tower, San Francisco, CA 94105	yes	yes	
54	4.30	D	31	1902+19	2,259,338.81	6,661,543.33	39°21'56.045"N	121°38'48.213"W	Oroville-Gridley Highway Bridge Upstream	Cutoff Wall			Bridge				111.65						4123		1964	County of Butte	7 County Center Drive, Oroville, CA 95965	yes	yes	
55	4.3-5.3	D	31				Not Verified		Open channel on land side of levee at toe	Cutoff Wall			IR(G)														yes	yes		
	4.30	D	30/31	1902+00					Reach 30/31 Transition																					
56	4.30	D	30	1901+79	2,259,317.57	6,661,574.18	39°21'55.834"N	121°38'47.821"W	Oroville-Gridley Highway Bridge Downstream	Cutoff Wall			Bridge				110.16							4123	yes, cond 5	1964	County of Butte	7 County Center Drive, Oroville, CA 95965	yes	yes
57	4.25	D	30	1900+82	2,259,239.50	6,661,630.24	39°21'55.060"N	121°38'47.111"W	Power pole at land side toe	Cutoff Wall			EL	OH			106.55									Pacific Gas & Electric	One Tower, Spear Tower, San Francisco, CA 94105	yes	yes	
58	4.17	D	30	1893+60	Not Verified		Not Verified		3/4 inch galvanized iron waterline through levee	Cutoff Wall			WL	3.1 rd	103.0 (USED)		98.34	99.40	103.31	102.01		pre-1955		part of orig O&M 1955			no	no		
59	4.16	D	30	1893+20	Not Verified		Not Verified		6 inch concrete encased cast iron sewer pipe through levee	Cutoff Wall			WW	13.9 rd	92.5 (USED)							pre-1955		part of orig O&M 1955						
60	4.15	D	30	1892+60	Not Verified		Not Verified		6 inch concrete encased cast iron sewer pipe through levee	Cutoff Wall			WW	13.8 rd	92.5 (USED)							pre-1955		part of orig O&M 1955						
61	4.14	D	30	1892+20	Not Verified		Not Verified		Two 4 inch concrete encased cast iron sewer lines through the levee. The Discharge end connected to the CM pump house at the landside toe of the bow levee.	Cutoff Wall			WW(P)	1.5 rd	93.0 (USED)							pre-1955		part of orig O&M 1955						
62	4.11	D	30	1892+89	2,258,542.19	6,662,052.68	39°21'49.413"N	121°38'42.751"W	Pole line over the levee.	Cutoff Wall			EL	OH			106.57									Pacific Gas & Electric	One Tower, Spear Tower, San Francisco, CA 94105	yes	yes	
63	4.10	D	30	1891+25	2,258,506.36	6,662,137.72	39°21'48.132"N	121°38'42.351"W	Pole line over the levee.	Cutoff Wall			EL	OH			106.06													
64	4.10	D	30	1888+70	2,258,285.10	6,662,367.26	39°21'46.416"N	121°38'39.013"W	Pole Line over the levee. 1 pole 10 feet from toe.	Cutoff Wall			EL	OH			106.32							5351		1966	Pacific Gas & Electric	One Tower, Spear Tower, San Francisco, CA 94105	yes	yes
65	3.38-4.25	D	30	1888+50	2,258,298.89	6,662,410.71	39°21'45.734"N	121°38'37.237"W	To expand an existing waste water treatment facility on the left bank of the Feather River and to install a 6 inch force main along the right bank levee of the Feather River/	Cutoff Wall			WW(P)	2.5 rd	103.0 (USED)		106.44	98.12	99.11	103.00	101.70		12103A	yes, cond 13	1979	City of Gridley	685 Kentucky Street, Gridley, CA 95948	yes	yes	
66	3.95	D	30	1887+29	2,258,210.65	6,662,463.86	39°21'44.858"N	121°38'36.548"W	12 kv power line crossing of levee	Cutoff Wall			EL	OH			106.57													
67	3.80	D	30	1868+17	Not Verified		Not Verified		Butte County Drainage District No. 1. An 18-Inch pipe through Levee.	Cutoff Wall			SD(G)				96.11	97.09	101.11	100.10						Butte County Drainage District	7 County Center Drive, Oroville, CA 95965	yes	yes	
68	3.35	D	30	1849+80	2,255,332.08	6,664,793.22	39°21'16.403"N	121°38'07.290"W	18 inch cast iron sewer pipe through levee. Concrete thrust block for cutoff walls on both shoulders. Siphon breaker in concrete pipe riser on the waterside shoulder.	Cutoff Wall			WW(P)	2.8 rd			103.50	94.96	95.93	100.03	99.20		5722	yes, cond 5	1967	City of Gridley	685 Kentucky Street, Gridley, CA 95948	yes	yes	
69	3.04	D	30	1834+42	2,254,466.85	6,665,951.72	39°21'07.717"N	121°37'52.331"W	24 inch CM drainage pipe through levee. Automatic drainage gate on waterside toe. 12 inch pipe sleeved through 24 inch pipe.	Cutoff Wall			IR (G)	12.5	88.00	90.00	102.50	93.69	94.66	98.93	97.61		pre-1955		part of orig O&M 1955			yes	yes	
70	2.82	D	30	1823+01	2,253,380.39	6,666,199.22	39°20'56.968"N	121°37'49.236"W	24 Inch CM pipe through levee. 36 inch RCP riser on the waterside slope. Same pipe as below	Cutoff Wall			SD(G)	21.8	77.60	79.60	101.40	93.46	94.43	98.68	96.94		pre-1955		part of orig O&M 1955			yes	yes	
71	2.82	D	30	1823+01	2,253,380.39	6,666,199.22	39°20'56.968"N	121°37'49.236"W	12 Inch cement coated and lined steel sewer pipe sleeved through the existing 24 inch CM pipe. Annular space pressure grouted.	Cutoff Wall			WW(G)	21.8	77.60	79.60	101.40	93.46	94.43	98.68	96.94		5722	yes, cond 5	1967	City of Gridley	685 Kentucky Street, Gridley, CA 95948	yes	yes	
72	2.74	D	30	1818+72	2,252,948.28	6,666,209.81	39°20'52.697"N	121°37'49.258"W	24 Inch CM pipe through levee. Slide gate in 36 inch CM riser on the waterside slope.	Cutoff Wall			WW(G)	25.2	74.10	76.10	101.30	93.36	94.33	98.59	96.69		pre-1955		part of orig O&M 1955	City of Gridley	685 Kentucky Street, Gridley, CA 95948	yes	yes	
73	2.7-2.82	D	30				Not Verified		Sewer Ponds located within 30' of both toes of the levee	Cutoff Wall																	yes	yes		
74	2.70	D	30	1816+63	2,252,738.86	6,666,205.04	39°20'50.627"N	121°37'49.195"W	City of Gridley. To install approximately 660 feet of chain link fence on the waterside toe and to authorize approximately 600 feet of 6 foot high chain link fence on the landside toe of the right bank levee of the Feather River.	Cutoff Wall			Fence				101.58							16912	yes, cond 17	1999	City of Gridley	685 Kentucky Street, Gridley, CA 95948	yes	yes
75	2.63-2.75	D	30	1815+00			Not Verified		City of Gridley. To operate a sand borrow pit and gravel borrow pit within the Feather River Designated Floodway, located on the right bank overflow of the Feather River.	Cutoff Wall			Struc											12614	yes, cond 13	1987	City of Gridley	685 Kentucky Street, Gridley, CA 95948	yes	yes
76	2.60	D	30	1813+70	Not Verified		Not Verified		24 inch CM pipe through levee. Concrete saddle and apron with Calco Slide gate.	Cutoff Wall			SD(G)		93.5 (USED)		93.25	94.22	98.48	96.39					part of orig O&M 1955					
		D	29/30	1813+33					Reach 29/30 Transition																					



LEVEE ENCROACHMENT LIST

APPENDIX A

Levee Mile	SBFCA Phase	SBFCA Reach	SBFCA STA	Location (NAD 83)		Location (WGS 84)		Encroachment	Proposed Levee Improvement	Required Improvement Work	Type	cover	Elevations (NGVD 1988)			Water Surface Elevation (NGVD 1988)				CVFPB Permit Information			Owner Information		verified	Picture Taken				
				Northing	Easting	Latitude	Longitude						Invert of Pipe	Top of Pipe	Top of Levee	100 Yr	200 Yr	500 Yr	DWR 1957	Permit No.	Require Permittee to Relocate	Year	Name	Address						
77	2.55	D	29	1809+65	2,252,095.81	6,666,415.94	39°20'44.262"N	121°37'46.526"W	24 Inch CM pipe through levee. Automatic drainage gate on waterside propped open and concrete headwall on land side.	No Rehabilitation Required	The pipeline is appears to be very close to meeting the elevation requirement over 200 year WSEL. type of pipe might not meet Title 23. We will need a positive shut-off structure installed and automatic drainage gate on waterside of levee. Pumping up and over levee does not appear to be feasible. Should be part of 30 percent but not included.	SD(G)	4.5	94.90	96.90	101.40	93.15	94.12	98.39	96.15	pre-1955		part of orig O&M 1955			yes	yes			
78	2.50-2.70	D	29	1809+00					Not Verified	Existing Prune and Walnut Orchard on right bank overflow area of the Feather River	No Rehabilitation Required		Trees							7782	yes, cond 13	1971	W.L. Boyd	Route 1, Box 578, Gridley, CA 95948	no	no				
79	2.35	D	29	1799+44	2,251,083.54	6,666,333.91	39°20'34.260"N	121°37'47.640"W	8"x .25" thick wall with exterior taped wrapped to a minimum thickness of 30 mil. The irrigation pipeline irrigation pipeline through levee	No Rehabilitation Required	Not sure if the pipeline meets the elevation requirement over 200 year WSEL. The type of pipe may or may not meet Title 23. Need to pothole to verify.	IR(P)	2.1	97.83	98.50	100.60	92.87	93.83	98.12	95.58	17213	yes, cond 35	2000	Robert C. Waller	585 Cowee Avenue, Gridley, CA 95948	yes	yes			
80	2.20	D	29	1792+96	2,250,482.00	6,666,094.79	39°20'28.324"N	121°37'50.715"W	Abandoned 24 inch CM drainage pipe through levee. Automatic drainage gate on waterside and concrete distribution box at waterside toe. Land side end of the pipe is not located	No Rehabilitation Required	Not sure if the abandonment meets title 23 requirements. Pipe may need to be properly abandoned or completely removed. Meets 30 percent design criteria not included.	SD(G)	10.2	87.40	89.40	99.60	92.50	93.47	97.81	95.17	pre-1955		part of orig O&M 1955			yes	yes			
81	2.11-2.50	D	29	1790+00					Not Verified	To authorize leveling and planting walnut and peach orchard on right overflow area of Feather River	No Rehabilitation Required		Trees							6622	no	1973	Robert C. Waller	585 Cowee Avenue, Gridley, CA 95948	no	no				
82	2.10	D	29	1785+55	Not Verified		Not Verified			24 Inch CM drain pipe through levee. Concrete Headwall at land side. Automatic Drainage Gate on waterside with splash pad.	No Rehabilitation Required	The pipeline is appears to be very close to meeting the elevation requirement over 200 year WSEL. type of pipe might not meet Title 23. We will need a positive shut-off structure installed and automatic drainage gate on waterside of levee. Pumping up and over levee does not appear to be feasible. Should be part of 30 percent but not included.	SD(G)				100.00	92.05	93.04	97.50	94.89	pre-1955		part of orig O&M 1955			yes	yes		
83	2.10	D	29	1785+24	2,249,771.67	6,665,793.11				24 Inch CM drain pipe through levee. Concrete Headwall at land side. Automatic Drainage Gate on waterside with splash pad.	No Rehabilitation Required	Not sure if the pipeline meets the elevation requirement over 200 year WSEL. The type of pipe may or may not meet Title 23. Could not find, need to pothole to verify.	SD(G)	5.7	92.30	94.30	100.00	92.04	93.03	97.49	94.88	pre-1955		part of orig O&M 1955			no	no		
84	1.94	D	29	1777+00	2,249,094.57	6,665,330.01	39°20'14.641"N	121°38'00.521"W	24 Inch CM drain pipe through levee. Concrete Headwall at land side. Automatic Drainage Gate on Waterside.	No Rehabilitation Required	The pipeline is appears to meet the elevation requirement over 200 year WSEL. type of pipe might not meet Title 23. We will need a positive shut-off structure installed and automatic drainage gate on waterside of levee. Pumping up and over levee does not appear to be feasible. Should be part of 30 percent but not included.	SD(G)	4.5	93.40	95.40	99.90	91.71	92.71	97.27	94.72	pre-1955		part of orig O&M 1955			yes	yes			
85	1.77-2.12	D	28	1770+00					Not Verified	To authorize existing walnut trees, located on the right bank of the Feather River.	Address Sutter Butte Main Canal. Rehabilitation Work TBD		Trees								12388	yes, cond 13	1978	Robert Waller	Route 1, Box 920, Gridley, CA 95948	no	no			
	1.79	D	28/29	1769+31						Reach 28/29 Transition																				
86	1.76	D	28	1767+67	2,248,176.53	6,665,251.10	39°20'05.570"N	121°38'01.573"W	Cox Spillway. North 60 Inch drain pipes through Levee. Slide Gates in 78 inch CM pipe wells on the waterside slope. Concrete bulkhead on both ends. Reinforced concrete spillway at the waterside end.	Address Sutter Butte Main Canal. Rehabilitation Work TBD	The pipeline does not meet title 23 requirements and will need a positive shut-off structure installed and automatic drainage gate on waterside of levee. Pumping up and over levee does not appear to be feasible. Should be part of 30 percent but not included.	SD(G)	8.4	86.70	91.70	100.10	91.31	92.33	97.02	94.54	pre-1955		part of orig O&M 1955	Butte Water District, Sutter Extension Water District	735 Virginia Street, Gridley, CA 95948	yes	yes			
87	1.76	D	28	1767+57	2,248,167.22	6,665,252.49	39°20'05.478"N	121°38'01.556"W	Cox Spillway. South 60 Inch drain pipes through Levee. Slide Gates in 78 inch CM pipe wells on the waterside slope. Concrete bulkhead on both ends. Reinforced concrete spillway at the waterside end.	Address Sutter Butte Main Canal. Rehabilitation Work TBD	The pipeline does not meet title 23 requirements and will need a positive shut-off structure installed and automatic drainage gate on waterside of levee. Pumping up and over levee does not appear to be feasible. Should be part of 30 percent but not included.	SD(G)	8.4	86.70	91.70	100.10	91.31	92.33	97.02	94.53	pre-1955		part of orig O&M 1955	Butte Water District, Sutter Extension Water District	735 Virginia Street, Gridley, CA 95948	yes	yes			
88	1.72-1.75	D	28	1767+30	2,248,140.77	6,665,254.84	39°20'05.217"N	121°38'01.527"W	To construct a 12kv aerial power line crossing of the right bank levee of the Feather River. The power line will extend from an existing pole located landward of the project levee to a new 50 foot pole located at least 20 feet water ward of the water ward toe of the levee/ The shall be 34 feet of clearance between the levee crown and the power line. The length of the span shall be 201 feet. The power line will extend from the 50 foot poles to a 30 foot pole to be located 135 downstream. This power line shall serve a pump covered by permit 11987 b Cox Brothers.	Address Sutter Butte Main Canal. Rehabilitation Work TBD		EL	OH				100.33					12020	yes, cond 13	1977	Pacific Gas and Electric Company	One Tower, Spear Tower, San Francisco, CA 94105	yes	yes		
89	1.71	D	28	1766+00					Not Verified	To construct, operate, and maintain a 12kv aerial power line extension across the right bank levee, channel, and left bank overflow of the Feather River. A 55 foot pole will be installed 31 feet water ward of the water ward shoulder of levee. The overhead conductors will extend from an existing pole, located 138 feet landward of the landward toe of levee, the proposed 55 pole. The span between the two poles will be 212 feet. A minimum clearance of 35 feet will be provided between the overhead conductors and the top of the levee. The proposed extension will extend across the river and floodway for an additional 3,165.5 feet and will consist of	Address Sutter Butte Main Canal. Rehabilitation Work TBD		EL	OH				100.33						12241	yes, cond 13	1977	Pacific Gas and Electric Company	One Tower, Spear Tower, San Francisco, CA 94105	yes	yes
90	1.71	D	28	1765+33	2,247,975.94	6,665,181.76	39°20'03.574"N	121°38'02.510"W	12-inch CM pipe through the Levee. Slide Gate on the landside end and concrete distribution box on waterside.	Address Sutter Butte Main Canal. Rehabilitation Work TBD	The pipeline does not appear to meet the elevation requirement over 200 year WSEL. Type of pipe appears to meet Title 23. We will need a positive shut-off structure installed and automatic drainage gate on waterside of levee.	IR(G)	4.5	94.50	95.50	100.00	91.03	92.09	96.90	94.55				1979	Cox Bros	Route 1, Box 926, Gridley, CA 95948	yes	yes		
91	1.70	D	28	1765+15	2,247,960.44	6,665,189.22	39°20'03.424"N	121°38'02.404"W	To install an irrigation pump on the right bank of the Feather River with a 12 inch steel pipe across the berm, levee, and the Sutter Butte Canal to existing orchards on the right bank downstream from Evans-Reimer Road. Concrete headwall at the waterside toe	Address Sutter Butte Main Canal. Rehabilitation Work TBD	The pipeline is appears to meet the elevation requirement over 200 year WSEL. Type of pipe might not meet Title 23. We will need a positive shut-off structure installed and automatic drainage gate on waterside of levee.	IR(P)	0.7	98.50	99.50	100.20	91.02	92.08	96.90	94.55	11987	yes, cond 13				yes	yes			
92	1.55	D	28	1756+27	2,247,101.40	6,665,410.42	39°19'54.940"N	121°37'59.617"W	Abandoned 12-inch CM pipe through the Levee. Slide Gate on the landside end and concrete distribution box on waterside.	Address Sutter Butte Main Canal. Rehabilitation Work TBD	Not sure if the abandonment meets title 23 requirements. Pipe may need to be properly abandoned or completely removed.	SD(G)	7.1	90.67	91.67	98.80	90.74	91.82	96.71	94.29						yes	yes			
93	1.5-1.60	D	28	1753+50					Not Verified	To plant approximately 1.13 hectares of kiwi plants and install an irrigation system supplied by an existing water well.	Address Sutter Butte Main Canal. Rehabilitation Work TBD		Trees								13410	yes, cond 13	1982	Edwin Roach	955 East Evans Reimer Road, Gridley, CA 95948	no	no			
94	1.45-1.50	D	28	1753+50					Not Verified	To install a electrical pole line service extension to a new agricultural pump on the right bank overflow area of the Feather River	Address Sutter Butte Main Canal. Rehabilitation Work TBD		EL	OH							13436	yes, cond 13	1982	Pacific Gas & Electric	5555 Florin-Perkins Road, Sacramento, CA 95826	no	no			
95	1.30	D	28	1745+00					Not Verified	To retain a newly constructed barn on the right bank overflow area of the Feather River, approximately 150 feet water ward of the right bank levee of the Feather River	Address Sutter Butte Main Canal. Rehabilitation Work TBD		EL	OH							10823	no	1975	W.W. Alexander	Route 1, Box 718, Gridley, CA 95948	no	no			
96	1.27	D	28	1741+32	2,245,620.98	6,665,550.58	39°19'40.299"N	121°37'57.893"W	Butte County Drainage District No. 1. A 16-Inch pipe through Levee. Emergency Repair Work on Pipe 3/5/02. Pipe not physically located	Address Sutter Butte Main Canal. Rehabilitation Work TBD	The pipeline does not meet title 23 requirements and will need a positive shut-off structure installed and automatic drainage gate on waterside of levee. Pumping up and over levee does not appear to be feasible.	SD(G)	9.0	87.00	89.00	97.77	90.28	91.38	96.38	93.85					1979	Butter County Drainage District No. 1	7 County Center Drive, Oroville, CA 95965	yes	yes	
97	1.00	D	28	1728+33	2,244,365.98	6,665,826.21	39°19'27.883"N	121°37'54.450"W	To install a 12kv pole line westerly across the right bank levee of the Feather River and the Sutter Butte Canal, then northerly approximately 180 meters for service to well pump.	Address Sutter Butte Main Canal. Rehabilitation Work TBD		EL	OH								13359	yes, cond. 13	1982	Pacific Gas & Electric Company	5555 Florin-Perkins Road, Sacramento, CA 95826	yes	yes			
98	0.94	D	28	1724+61	2,244,008.46	6,665,796.35	39°19'24.351"N	121°37'54.848"W	12 kv overhead electrical power line and telephone line crossing	Address Sutter Butte Main Canal. Rehabilitation Work TBD		EL	OH				97.77									yes	yes			
99	0.62-1.00	D	28	1721+60					Not Verified	1800 feet of 4.5 foot tall barbed wire fence located at waterside toe of levee.	Address Sutter Butte Main Canal. Rehabilitation Work TBD										17271			Peckema Bros						
	0.90	D	27/28	1721+60						Reach 27/28 Transition																				
100	0.90	D	27	1721+20	2,243,713.99	6,665,636.50	39°19'21.446"N	121°37'56.897"W	End 18" wide, 12-25 feet deep cutoff wall on crown with monitoring system 2000 lineal feet.	Address Sutter Butte Main Canal. Rehabilitation Work TBD							96.10								The Research Foundation of CSU Chico		yes	yes		



LEVEE ENCROACHMENT LIST

APPENDIX A

Levee Mile	SBFCA Phase	SBFCA Reach	SBFCA STA	Location (NAD 83)		Location (WGS 84)		Encroachment	Proposed Levee Improvement	Required Improvement Work	Type	cover	Elevations (NGVD 1988)			Water Surface Elevation (NGVD 1988)				CVFPB Permit Information			Owner Information		verified	Picture Taken
				Northing	Easting	Latitude	Longitude						Invert of Pipe	Top of Pipe	Top of Levee	100 Yr	200 Yr	500 Yr	DWR 1957	Permit No.	Require Permittee to Relocate	Year	Name	Address		
101	0.78	D	27	1707+34	2,242,329.23	6,665,666.71	39°19'07.758"N	121°37'56.584"W	Begin 18" wide, 12-25 feet deep cutoff wall on crown with monitoring system 2000 lineal feet.	Address Sutter Butte Main Canal. Rehabilitation Work TBD					96.80								The Research Foundation of CSU Chico		yes	yes
	0.77	D	26/27	1707+11					Reach 26/27 Transition																	
102	0.46	D	26	1699+62	2,241,637.34	6,665,378.46	39°19'00.931"N	121°38'00.288"W	Propane storage tanks at waterside toe of levee	Address Sutter Butte Main Canal. Rehabilitation Work TBD	G				97.13										yes	yes
103	0.44	D	26	1697+96	2,241,496.45	6,665,289.21	39°18'59.542"N	121°38'01.430"W	To retain a telephone line aerial crossing of the right bank levee of the Feather River. The aerial telephone line extends from a pole located landward of the Sutter Butte Main Canal to a pole located near water ward toe of the levee.	Address Sutter Butte Main Canal. Rehabilitation Work TBD	TL	OH			97.58				10422	no	1975	Pacific Telephone and Telegraph Co.	1426 Howe Avenue, Suite 50, Sacramento, CA 95825	yes	yes	
104	0.40	D	26	1695+85					To construct a caretaker/ranch office and remove an existing structure on the right bank designated floodway of the Feather River.	Address Sutter Butte Main Canal. Rehabilitation Work TBD	Struc								15891	no	1992	J.F. Desmond	P.O. Box 211, Gridley, California 95948			
105	0.30	D	26	1691+00					To authorize farm buildings (a walnut processing plant and shop) on the water ward toe of the right bank levee on the Feather River, 200 feet north of Chandon Avenue. The buildings are a 30 x 80 foot walnut dehydrator and a 40 x 40 shed.	Address Sutter Butte Main Canal. Rehabilitation Work TBD	Struc								11963	yes, cond. 13	1977	J.F. Desmond	P.O. Box 211, Gridley, California 95948			
106	0.00-0.53	D	26	1690+00					To level and plant 160 acres of land between right bank levee and Feather River, off end of Chandon Avenue and opposite mouth of Honcut Creek.	Address Sutter Butte Main Canal. Rehabilitation Work TBD	Trees								6566	yes, cond 5	1969	Butte Farms, Inc.	P.O. Box 338, Gridley, CA 95948			
107	0.01	D	26	1675+98	2,239,584.22	6,664,224.05	39°18'40.683"N	121°38'15.081"W	12 kv power line crossing of levee	Address Sutter Butte Main Canal. Rehabilitation Work TBD	EL	OH			96.20				3692	yes, cond 5	1961	Pacific Gas and Electric Company	530 E Street, Marysville, CA 95901	yes	yes	
	0.00	D	26	1675+50					Maintenance Area 16/ Maintenance Area 7 Transition																	
1	4.09	D	26	1675+27	2,239,518.21	6,664,204.12	39°18'40.036"N	121°38'15.340"W	Butte County Drainage District No. 1. 60" x 72" RCP culvert through levee. Slide gate in concrete well on waterside slope.	Address Sutter Butte Main Canal. Rehabilitation Work TBD	SD(G)	17.0	73.90	78.90	95.90	87.76	89.02	94.62	91.42	pre-1955		part of orig O&M 1955	Butter County Drainage District No. 1	7 County Center Drive, Oroville, CA 95965	yes	yes
		D	25/26	1674+37					Reach 25/26 Transition																	
2	3.9-3.94		25	1670+00					To plant kiwi plants in place of fruit and nut trees on the right bank overflow of the Feather River south of Chandon Avenue near Live Oak.	No Rehabilitation Required	Trees								12200	yes, cond 13	1981	Lois Sconmaker	1424 Miranda, Yuba City, CA 95991	no	no	
3	3.90		25	1667+00					To clear the overflow area of brush and construct a foot bridge over an old channel that meanders across the overflow area. To install a septic tank and leach lines, electric service, drill a well and park a mobile home in the overflow area.	No Rehabilitation Required	Struc								7438	yes, cond 13	1971	Grover James	925 N. Rancho Road, El Sobrante, CA 94803	no	no	
4	3.85		25	1665+32	2,238,525.15	6,664,192.56	39°18'30.216"N	121°38'15.536"W	To construct a 12 kv aerial power line extension across the levee and into the floodway of the Feather River. An existing pole on the landside of the levee will be replaced with a new 55 foot pole to be located 13 feet from the landward toe of the levee. The overhead conductors will extend across the levee to a 55 foot pole located in the floodway 140 feet from the waterside toe of the levee. The span between the 2 poles will be 233 feet. A minimum clearance of 31 feet is required.	No Rehabilitation Required	EL	OH			95.67					7101	yes, cond 5	1970	Pacific Gas and Electric Company	530 E Street, Marysville, CA 95901	yes	yes
5	3.65		25	1653+15	2,237,309.20	6,664,181.79	39°18'18.198"N	121°38'15.734"W	12 Kv overhead power line crossing and along levee	No Rehabilitation Required	EL	OH			95.17								Pacific Gas & Electric	One Tower, Spear Tower, San Francisco, CA 94105	yes	yes
6	3.41-3.73		25	1650+00					To retain a walnut orchard on the right bank overflow area of the Feather River. The orchard is located a narrow strip of ground between the project levee and Drainage District No. 1's drain ditch.	No Rehabilitation Required	Trees								11855	yes, cond 13	1976	Madsen Ranch	P.O. Box 134, Live Oaks, CA 95953	no	no	
7	3.39		25	1639+00	2,235,906.77	6,664,006.17	39°18'04.327"N	121°38'17.999"W	RD 777 Lateral 11. There are 2-24 inch steel pipes through levee. Automatic drainage gates on waterside end of pipe.	No Rehabilitation Required	SD(G)	16.2	78.40	80.40	94.60	87.19	88.46	94.09	90.91	pre-1955		part of orig O&M 1955	Reclamation District No. 777	P.O. Box 876, Gridley, CA 95948	yes	no
8	3.38		25						Construction of Waterside Approach Ramp 500 feet north of Campbell Road and Meader Road	No Rehabilitation Required									3019	yes, cond 4	1959	Peder Pederson	Route 1, Box 33, Live Oak, CA	yes	no	
9	3.38		25	1638+72	2,235,879.28	6,664,006.22	39°18'04.071"N	121°38'18.040"W	12 Kv overhead power line crossing and along levee	No Rehabilitation Required					94.50										yes	yes
10	3.14-3.39		25	1635+00					To plant a prune orchard on the right bank overflow area of the Feather River at the end of Riviera Road	No Rehabilitation Required									8616	yes, cond 13	1973	James Eva	11751 Meter Road, Live Oak, CA 95953	no	no	
		C	24/25	1623+86					Reach 24/25 Transition																	
11	2.87	C	24	1610+92	2,233,196.84	6,664,513.54	39°17'37.519"N	121°38'11.755"W	RD 777 Lateral 12. An 18 inch CM pipe through levee. Automatic drainage gate on waterside end of pipe.	Cutoff Wall and excavate and place 4.5 feet of compacted clay in bottom of Sutter Butte Main Canal	SD(G)	17.3	76.50	78.00	93.80	87.00	88.28	93.90	90.69	pre-1955		part of orig O&M 1955	Reclamation District No. 777	P.O. Box 876, Gridley, CA 95948	yes	yes
	2.83	C	23/24	1609+37					Reach 23/24 Transition																	
12	2.38	C	23	1585+05					Abandoned 12 inch CM pipe through levee. Automatic drainage gate on waterside end of pipe	Cutoff Wall	?		86.4 (USED)		86.21	87.54	93.24	89.74	pre-1955		part of orig O&M 1955				no	no
13	1.83	C	23	1557+00					To add approximately 575 feet of 12 kv line to an existing power line on Cooley Road and within the overflow area of the Feather River	Cutoff Wall	EL	OH			92.80				12792	yes, cond. 13	1971	Pacific Gas and Electric Company	5555 Florin-Perkins Road, Sacramento, CA 95826	no	no	
14	1.83	C	23	1556+58	2,228,785.42	6,665,751.32	39°16'53.885"N	121°37'56.205"W	To extend a 12 kv pole line from the intersection of Cooley Road and the right bank levee of the Feather across the levee and continue for 1500 feet easterly along Cooley Road. The pole line will serve a 25 HP river pump.	Cutoff Wall	EL	OH			92.80				7336	yes, cond. 13	1971	Pacific Gas and Electric Company	5555 Florin-Perkins Road, Sacramento, CA 95826	yes	yes	
15	1.83	C	23	1556+22	2,228,750.17	6,665,741.92			8 inch CM pipe through levee. Automatic drainage gate on waterside end of pipe. (No gate found, ARV on land side by structure. Line may be to the north pump plant from permit 7380)	Cutoff Wall	IR(P)	8.0	81.0 (USED)		92.80	85.09	86.54	92.64	89.01	pre-1955		part of orig O&M 1955			no	no
16	1.80	C	23	1555+00					To install pumping plants at two locations on the right bank of the Feather River	Cutoff Wall	IR(P)								7380	yes, cond 13	1971	William Filter, Jr.	Route 2, Box 9, Chico, CA 95926	no	no	
17	1.71	C	23	1549+63	2,228,117.97	6,665,558.67			12 inch CM pipe through levee. Automatic drainage gate on waterside end of pipe. Pipe partially plugged	Cutoff Wall	SD(G)	12.5	79.05	80.05	92.50	85.05	86.51	92.61	88.91	pre-1955		part of orig O&M 1955			no	no
18	1.30-1.83	C	23	1548+00					To level and plant walnuts and either peaches or prunes on the right bank overflow area of the Feather River upstream from Live Oak Park.	Cutoff Wall	Trees								6997	yes, cond 5	1970	William Filter, Jr.	Route 2, Box 9, Chico, CA 95926	no	no	
19	1.50	C	23	1539+00					To install 25 HP pumping plants at two locations on the right bank of the Feather River	Cutoff Wall	IR(P)								7380	yes, cond 13	1971	William Filter, Jr.	Route 2, Box 9, Chico, CA 95926	no	no	
20	1.45	C	23	1536+12	2,226,796.70	6,665,666.06	39°16'34.268"N	121°37'57.407"W	RD 777 Lateral 7. There is a 36 inch CM pipe through levee. Automatic drainage gate on waterside end of pipe.	Cutoff Wall	SD(G)	13.7	75.65	78.65	92.32	84.94	86.40	92.52	88.68	pre-1955		part of orig O&M 1955	Reclamation District No. 777	P.O. Box 876, Gridley, CA 95948	yes	yes
21	1.45	C	23	1535+95	2,226,780.47	6,665,668.20	39°16'34.070"N	121°37'57.365"W	To extend a 12 kv pole line 410 feet northerly to supply a 25 HP pump located in the river. The pump is pump referenced in permit 7280.	Cutoff Wall	EL	OH			92.39				7335	yes, cond 13	1971	Pacific Gas and Electric Company	5555 Florin-Perkins Road, Sacramento, CA 95826	yes	yes	
22	1.44	C	23	1535+64	2,226,750.14	6,665,678.35	39°16'33.770"N	121°37'57.237"W	To widen access road to Live Oak Recreation Area at the east end of Pennington Road on the right bank levee and berm of the Feather River	Cutoff Wall	Struc								7294	yes, cond 5	1971	County of Sutter	1160 Civic Center Blvd, Yuba City, CA 95993	yes	yes	
23	1.40	C	23	1535+00					To install 2500 lf of 2 inch diameter Sch 40 PVC water pipe and 600 lf of 1 inch Sch 40 PVC pipe within the west bank overflow. (Permit number has been changed to 7440-D)	Cutoff Wall	W(P)								18256	yes, cond 24	2007	County of Sutter	1130 Civic Center Blvd, Yuba City, CA 95993			



LEVEE ENCROACHMENT LIST

APPENDIX A

Levee Mile	SBFCA Phase	SBFCA Reach	SBFCA STA	Location (NAD 83)		Location (WGS 84)		Encroachment	Proposed Levee Improvement	Required Improvement Work	Type	cover	Elevations (NGVD 1988)			Water Surface Elevation (NGVD 1988)				CVFPB Permit Information			Owner Information		verified	Picture Taken
				Northing	Easting	Latitude	Longitude						Invert of Pipe	Top of Pipe	Top of Levee	100 Yr	200 Yr	500 Yr	DWR 1957	Permit No.	Require Permittee to Relocate	Year	Name	Address		
24	1.36-1.39	C	23	1534+00			Not Verified	To construct a water supply system, a sanitary disposal system and restrooms for the Live Oak Recreational Area	Cutoff Wall		Struc								6855	yes, cond 5	1969	County of Sutter	1130 Civic Center Blvd, Yuba City, CA 95993			
25	1.36	C	23	1532+40	Not Verified		Not Verified	Potential Pipe Crossing. 6" Steel through levee	Cutoff Wall	Not sure about the elevation criteria being met. The pipeline does not meet title 23 requirements and will need a positive shut-off structure installed and automatic drainage gate on waterside of levee	?		82.2 (USED)	91.91	84.80	86.27	92.41	88.56	pre-1955		part of orig O&M 1955			yes	yes	
26	1.36	C	23	1532+45	2,225,437.02	6,665,722.95	39°16'20.789"N	121°37'56.738"W	Pump Station adjacent to Levee	Cutoff Wall	IR(P)								7380	yes, cond 13	1971	William Filter, Jr.	Route 2, Box 9, Chico, CA 95926	yes	yes	
27	1.33-1.43	C	23	1530+00			Not Verified	Live Oak Park to authorize trailer site, a porch, a metal storage building, fence across the waterside berm and waterside slope of the levee, on the right bank of the overflow area of the Feather River.	Cutoff Wall		Struc								7440	yes, cond 13	1973	County of Sutter	1160 Civic Center Blvd, Yuba City, CA 95993	no	no	
28	1.17	C	23	1524+35	Not Verified		Not Verified	Potential Pipe Crossing. 6" Steel through levee	Cutoff Wall	Not sure about the elevation criteria being met. The pipeline does not meet title 23 requirements and will need a positive shut-off structure installed and automatic drainage gate on waterside of levee	?		80.1 (USED)	91.67	84.27	85.80	92.05	87.89	pre-1955		part of orig O&M 1955			yes	yes	
	0.75	C	22/23	1503+83				Reach 22/23 Transition																		
29	0.50-1.10	C	22	1530+00			Not Verified	To authorize existing pear orchard and plant 10 additional acres on the right bank overflow of the Feather River downstream of Archer Road	Cutoff Wall		Trees								12672	yes, cond 13	1980	Elvyn Denny	2034 Fir Street, Live Oak, CA 95953	no	no	
30	0.70-1.14	C	22	1520+25			Not Verified	To extend approximately 1,950 feet of 12kv electric service line in the right bank overflow area of the Feather River downstream from Archer Avenue crossing	Cutoff Wall		EL	OH							12824	yes, cond 13	1979	Pacific Gas and Electric Company	P.O. Box 7444, Sacramento, CA 95826	no	no	
31	0.64	C	22	1493+88	2,222,717.57	6,664,731.41			Location of gate with no access	Cutoff Wall	Fence			91.44					17139	yes, cond 16				yes	yes	
32	0.47	C	22	1492+00			Not Verified	To construct an aerial telephone crossing of the right bank levee of the Feather River	Cutoff Wall		structure								6256	yes, cond 5	1969	Pacific Telephone and Telegraph Company	3675 "T" Street, Sacramento, CA	no	no	
33	0.42-.47	C	22	1482+00			Not Verified	To authorize a 4 x 17 foot wooden walkway on the landside shoulder; two tool sheds, four walnut trees, a barbed wire and wooden fence within 10 feet landward of the landside toe, and an electrical gate across the crown of the right bank levee of the Feather River	Cutoff Wall		structure								17139	yes, cond 15	1999	Wayne Sue	P.O. Box 213, Live Oak, California 95953	yes	yes	
34	0.38	C	22	1479+98	2,221,343.18	6,664,540.45	39°15'40.364"N	121°38'09.549"W	Location of electric gate with no access	Cutoff Wall	Fence			91.44					17139	yes, cond 16				yes	yes	
35	0.19	C	22	1470+15	2,220,360.26	6,664,561.50	39°15'30.656"N	121°38'11.766"W	To authorize a 4 x 17 foot wooden walkway on the landside shoulder and a 6 x 300 foot wooden lattice fence within 10 feet landward of the landside toe and parallel to the right bank of levee of Feather River	Cutoff Wall	structure								17168	yes, cond 15	1999	Mariko Gushi	1320 Bishop Road, Live Oak, CA 95953	yes	yes	
36	0.15	C	22	1468+70			Not Verified	To authorize four trees (oleander, pines, cherry, and birch) on the landside slope and a 5 foot high, 170 foot long wire fence within 7 feet of landward of the landside toe of the right bank levee of the Feather River	Cutoff Wall		structure								17129	yes, cond 14	1999	Kevin and Mary Ann McCool	1210 Bishop Road, Live Oak, CA 95953	no	no	
37	0.10	C	22	1466+02	2,219,947.02	6,664,564.97	39°15'26.570"N	121°38'11.743"W	Transformer located 40'± from land side toe	Cutoff Wall	EL			95.06										yes	yes	
38	0.10	C	22	1465+50			Not Verified	To construct access ramp across the right bank levee of the Feather River	Cutoff Wall		Struc								4741	yes, cond 5	1964	Edward J. Heinrich	2434 Archer Avenue, Live Oak, CA 95953	no	no	
39	0.10	E	22	1465+50			Not Verified	The existing 36 inch CMP installed in 1913 failed on March 1964. The permit was for repair of levee and removal of the pipe prior to November 1964.	Cutoff Wall		IR(G)								4556 and 4719	yes, cond 5	1964 and 1965	Butte Water District, Sutter Extension Water District	735 Virginia Street, Gridley, CA 95948	no	no	
40	0.00-0.25	C	22	1461+00			Not Verified	To maintain existing your walnut orchards on the right bank of the Feather River, downstream from Bishop Avenue.	Cutoff Wall		Trees								11762	yes, cond 13	1976	Edward J. Heinrich	2434 Archer Avenue, Live Oak, CA 95953	no	no	
		C	22	1460+00				Levee District No. 9 Levees /Maintenance Area 16 Transition																		
	5.73	C	21/22	1433+83				Reach 21/22 Transition																		
41	5.67	C	21	1430+55	2,216,425.27	6,664,383.06	39°14'51.685"N	121°38'14.253"W	Sunset Pump Station owned an operated by Sutter Extension Main Pump Station. This is the 60 Inch steel pipe a through the levee. Pump end has gate valves on structure. Automatic drainage gates on the landside end.	Cutoff Wall	IR(P)	15.6	80.61	85.61	91.16	81.70	83.63	90.27	85.74	pre-1955 and 3610	yes, cond 5 (for pumps)	part of orig O&M 1955 and 1961	Sutter Extension Water District	4525 Franklin Road, Yuba City, CA 95993-9316	yes	yes
42	5.67	C	21	1430+47	2,216,417.64	6,664,382.64	39°14'51.614"N	121°38'14.261"W	Sunset Pump Station owned an operated by Sutter Extension Main Pump Station. This is the 60 Inch steel pipe a through the levee. Pump end has gate valves on structure. Automatic drainage gates on the landside end.	Cutoff Wall	IR(P)	15.6	80.42	85.42	91.13	81.70	83.63	90.27	85.74	pre-1955 and 3610	yes, cond 5 (for pumps)	part of orig O&M 1955 and 1961	Sutter Extension Water District	4525 Franklin Road, Yuba City, CA 95993-9316	yes	yes
43	5.67	C	21	1430+40	2,216,410.86	6,664,382.27	39°14'51.758"N	121°38'14.247"W	Sunset Pump Station owned an operated by Sutter Extension Main Pump Station. This is the 36 inch steel pipe through the levee. Pump end has gate valves on structure. Automatic drainage gates on the landside end.	Cutoff Wall	IR(P)	15.6	82.92	85.92	91.18	81.70	83.63	90.27	85.74	pre-1955 and 3611	yes, cond 5 (for pumps)	part of orig O&M 1955 and 1961	Sutter Extension Water District	4525 Franklin Road, Yuba City, CA 95993-9316	yes	yes
44	5.67	C	21	1430+40			Not Verified	To construct and operate a vertical-perforated plate fish screen with a power operated brush on the right bank of Feather River. Located at Sunset Pump Plant.	Cutoff Wall		IR									13381	yes, cond 13	1982	Department of Fish and Game	1701 Nimbus Road, Ranch Cordova, CA 95670	no	no
45	5.67	C	21		Not Verified		Not Verified	36" CM pipe crossing through levee	Cutoff Wall	Not sure if the abandonment meets title 23 requirements. Pipe may need to be properly abandoned or completely removed. Could not find pipe. Should be part of 30 percent but not included	IR									pre-1955		part of orig O&M 1955			no	no
46	5.67	C	21	1429+98	2,216,368.25	6,664,376.98	39°14'51.204"N	121°38'14.314"W	12 KV OH Power	Cutoff Wall	EL	OH		91.19									Pacific Gas & Electric	One Tower, Spear Tower, San Francisco, CA 94105	yes	yes
47	5.67	C	21	1429+68	2,216,338.71	6,664,376.58	39°14'50.912"N	121°38'14.321"W	12 KV OH Power	Cutoff Wall	EL	OH		91.18									Pacific Gas & Electric	One Tower, Spear Tower, San Francisco, CA 94105	yes	yes
48	5.65	C	21	1429+50			Not Verified	Existing rubble coffer dam constructed with Rec Board Permit 3610. Repair coffer dam.	Cutoff Wall		IR								3610 and 7762	no	1961 and 1971	Sutter Extension Water District	4525 Franklin Road, Yuba City, CA 95993-9316	yes	no	
49		C	21	1428+50				Sutter Butte Main Canal Begin (Station 1428+50 to 1433+83) - Main Irrigation Canal approx 420 cfs	Cutoff Wall		IR															
49	5.20	C	21				Not Verified	12 kv pole line crossing of levee 30 feet from waterside toe for 792 feet	Cutoff Wall		EL	OH							8533			1973	Pacific Gas and Electric Company	5555 Florin-Perkins Road, Sacramento, CA 95826	no	no
50	5.08	C	21	1399+27	2,213,450.77	6,664,966.80	39°14'22.343"N	121°38'06.965"W	To install a 12 kv pole line across and along the right bank levee of the Feather River.	Cutoff Wall	EL	OH		90.49					7439	yes, cond 13	1971	Pacific Gas and Electric Company	5555 Florin-Perkins Road, Sacramento, CA 95826	yes	yes	
51	4.91	C	21				Not Verified	End Seepage Interceptor Trench located on landside toe of levee	Cutoff Wall		SEEP								15201	no	1991	Levee District No. 9	1190 Civic Center Blvd., Yuba City, CA 95991	no	no	
52	4.91-5.08	C	21				Not Verified	Plant 9 acres of Kiwi plants on waterside of levee between Bilesford and Hermanson Avenues	Cutoff Wall		Trees								12589	yes, cond 13	1978	Tom-A-Hay Farms, Inc.	P.O. Box 461, Live Oak, CA 95953			
53	4.83-4.91	C	21				Not Verified	Plant 14 acres of Kiwi plants on waterside of levee upstream of Hermanson Avenue	Cutoff Wall		Trees								12623	yes, cond 13	1979	John Tomlinson and Anthony Hess	P.O. Box 461, Live Oak, CA 95953			
54	4.73-4.81	C	21				Not Verified	To construct a well and septic tanks for 2 mobile homes and to extend electrical service to well on right bank overflow area of Feather River	Cutoff Wall		Struc								7994	yes, cond 13	1972	Johnny McReynolds	2650 The Alameda, Santa Clara, CA 95050	no	no	
55	4.76-4.83	C	21				Not Verified	To plant 8 acres of kiwi plants, a submersible pump, and underground sprinkler system on the right bank overflow area of the Feather River	Cutoff Wall		Trees								12816	yes, cond 13	1979	Tom-A-Hay Farms, Inc.	8935 Sinnerd Avenue, Live Oak, CA 95953	no	no	



LEVEE ENCROACHMENT LIST

APPENDIX A

Levee Mile	SBFCA Phase	SBFCA Reach	SBFCA STA	Location (NAD 83)		Location (WGS 84)		Encroachment	Proposed Levee Improvement	Required Improvement Work	Type	cover	Elevations (NGVD 1988)			Water Surface Elevation (NGVD 1988)				CVFPB Permit Information			Owner Information		verified	Picture Taken	
				Northing	Easting	Latitude	Longitude						Invert of Pipe	Top of Pipe	Top of Levee	100 Yr	200 Yr	500 Yr	DWR 1957	Permit No.	Require Permittee to Relocate	Year	Name	Address			
56	4.81	C	24			Not Verified		To pump storm water from landward drainage ditch over the right bank levee of the Feather River from one separate location for approximately size at the end of Hermansen Road. Pipe has been removed.	Cutoff Wall		SD(P)								13611	yes, cond 13	1983	Sundown Farms, Inc.	1350 Hermansen Avenue, Live Oak, CA 95953	n/a	n/a		
57	4.80	C	21	1391+96	2,212,767.43	6,665,226.86	39°14'15.579"N	121°38'03.695"W	To extend a 12 kv pole line into the right bank levee and overflow area of the Feather River	Cutoff Wall	EL	OH			89.77				8533	yes, cond 13		Pacific Gas & Electric	One Tower, Spear Tower, San Francisco, CA 94105	yes	yes		
58	4.50	C	21	1375+35	2,211,296.56	6,665,998.34	39°14'01.009"N	121°37'53.965"W	Sutter Extension Sunset Lateral Begin (Station 1375+35 to 1428+50) Open irrigation ditch 15 feet from landside toe	Cutoff Wall	IR				89.42							Sutter Extension Water District	4525 Franklin Road, Yuba City, CA 95993-9316	yes	yes		
59	4.48	C	21	1374+94	2,211,260.36	6,666,016.66	39°14'00.651"N	121°37'53.734"W	Begin Seepage Interceptor Trench located on landside toe of levee	Cutoff Wall	SEEP								15201	no	1991	Levee District No. 9	1190 Civic Center Blvd., Yuba City, CA 95991	no	no		
60	4.10-4.38	C	21	1375+00			Not Verified		To level and plant 13 acres Peach Orchard on the right bank overflow area of the Feather River	Cutoff Wall	Trees								9846	yes, cond 13	1975	Bruce Jenlins	7035 Kent Avenue, Live Oaks, CA 95953	no	no		
	4.47	C	20/21	1374+33					Reach 20/21 Transition																		
61	4.10-4.38	C	20	1350+00			Not Verified		To plant peach trees and to establish two wells and install pumping plants in right bank overflow of the Feather River	Cutoff Wall	EL	OH							6380	yes, cond 5	1969	James Eager	7245 Larkin Road, Yuba City, CA 95953	no	no		
62	4.10-4.38	C	20	1350+00			Not Verified		To extend 12 kv pole line parallel to the water ward toe of levee for a distance of approximately 1,500 feet north from Koch Lane, on the right bank overflow area of the Feather River.	Cutoff Wall	EL	OH							10749	yes, cond 13	1975	Pacific Gas and Electric Company	5555 Florin-Perkins Road, Sacramento, CA 95826	no	no		
63	4.10	C	20	1347+37	2,208,612.74	6,666,676.45	39°13'34.454"N	121°37'45.485"W	To install a 60 foot pole 86 feet from the landward toe of the levee, a 60 foot pole 10 feet from the water ward toe of the levee and 6 additional poles on the right bank overflow of the Feather River. The 12kv electrical service will be extend across the levee to serve a pump installed under Permit 6380. The span across the levee will be 234 feet. The clearance between the overhead wires and the top of the levee will be 21 feet.	Cutoff Wall	EL	OH			89.77				6515	yes, cond 13	1969	Pacific Gas and Electric Company	5555 Florin-Perkins Road, Sacramento, CA 95826	yes	yes		
64	4.10	C	20	1347+00	2,208,582.82	6,666,680.19	39°13'34.158"N	121°37'45.487"W	Underground communication cable through levee	Cutoff Wall	TL	4.0			89.58	79.98	82.33	88.93	84.39					yes	yes		
65	4.00	C	20	1345+00			Not Verified		To plant prune orchard on the right bank overflow area of the Feather River, downstream from Koch Road	Cutoff Wall	Trees								9278	yes, cond 13	1974	Justin Micheli	6005 Highway 99, Live Oak, CA 95993	yes	yes		
66	4.00	C	20	1345+00			Not Verified		To retain walnut orchard on the right bank overflow area of the Feather River, downstream from Koch Road	Cutoff Wall	Trees								9277	no	1974	Justin Micheli	6005 Highway 99, Live Oak, CA 95993	yes	yes		
67	3.72	C	20	1328+00			Not Verified		To pump storm water from landward drainage ditch over the right bank levee of the Feather River from three separate location for approximately size at the end of Hermansen Road. Pipe has been removed.	Cutoff Wall	SD(P)								13603	yes, cond 13	1983	Justin Micheli	6005 Highway 99, Live Oak, CA 95993	no	no		
68	3.71	C	20	1328+00			Not Verified		To construct a 12 kv aerial power line on the right bank overflow area of the Feather River	Cutoff Wall	EL	OH							11593, 11593A	yes, cond 13	1976	Pacific Gas and Electric Company	One Tower, Spear Tower, San Francisco, CA 94105	yes	no		
69	3.71	C	20	1327+00	2,206,597.56	6,666,928.33	39°13'14.525"N	121°37'42.389"W	12KV overhead power line crossing	Cutoff Wall	EL	OH			89.71							Pacific Gas and Electric Company	One Tower, Spear Tower, San Francisco, CA 94105	yes	no		
70	3.53	C	20	1317+15	Not Verified		Not Verified		Temporary storm discharge pipe through levee	Cutoff Wall	SD(P)								13603		1983	Justin Micheli	6005 Highway 99, Live Oak, CA 95993	no	no		
71	3.49	C	20	1315+03	2,205,398.45	6,666,943.63	39°13'02.672"N	121°37'42.272"W	End Seepage Interceptor Trench located on landside toe of levee	Cutoff Wall	SEEP								15201		1991	Levee District No. 9	1471 Coats Drive, Yuba City, CA 95991	yes	no		
72	3.48	C	20	1314+80	2,205,375.80	6,666,944.25	39°13'2.438"N	121°37'42.272"W	Micheli Storm Drainage Pump Station. To install a pump with 20 inch steel discharge pipe through the right bank of the Feather River for the removal of stormwater.	Cutoff Wall	SD(P)	2.0	84.73	86.40	88.20	79.00	81.65	88.28	83.94	13657	yes, cond 13	1983	Micheli	6005 Highway 99, Live Oak, CA 95993	yes	yes	
73	3.45-3.75	C	19	1312+08			Not Verified		To plant an orchard and grade the land on the right bank overflow area of the Feather River. The project is located north of Yuba City approximately 5.5 miles.	Cutoff Wall	Trees								3688	no	1961	Micheli	6005 Highway 99, Live Oak, CA 95993				
73	3.30	C	20	1305+30	Not Verified		Not Verified		To pump storm water from landward drainage ditch over the right bank levee of the Feather River from one separate location for approximately size at the end of Hermansen Road. Pipe has been removed.	Cutoff Wall	SD(P)								13610	yes, cond 13	1983	Wilmax Farms, Inc	1857 Encinal Road, Live Oak, CA 95953	n/a	n/a		
	3.18	C	19/20	1297+83					Reach 19/20 Transition																		
74	3.0-3.3	C	19	1295+00			Not Verified		To plant an orchard and grade the land on the right bank overflow area of the Feather River. The project is located north of Yuba City approximately 1.3 miles upstream (north) of the intersection of Eager Road and Live Oak Boulevard	Cutoff Wall	Trees								16298	no	1995	Timothy and Lori Filter	1010 Morse Road, Live Oak, CA 95953				
75	3.10	C	19	1293+66	2,203,266.22	6,666,867.99	39°12'41.599"N	121°37'43.329"W	End Concrete Lined Ditch on landside toe of levee	Cutoff Wall	SEEP				89.14							USACE?	1325 J Street, Sacramento, CA	yes	yes		
76	3.08	C	19	1293+66	2,203,266.22	6,666,867.99	39°12'41.599"N	121°37'43.329"W	12 KV Overhead Power line crossing of levee. One pole 6 foot from levee toe.	Cutoff Wall	EL	OH			89.14				4584	yes, cond 5	1964	Pacific Gas & Electric	One Tower, Spear Tower, San Francisco, CA 94105	yes	yes		
77	3.00	C	19						Begin Seepage Interceptor Trench located on landside toe of levee	Cutoff Wall	SEEP								15201	no	1991	Levee District No. 9	1471 Coats Drive, Yuba City, CA 95991	no	no		
78	2.90	C	19	1284+91	2,202,406.27	6,666,705.08	39°12'33.105"N	121°37'45.443"W	Begin Concrete Lined Ditch on landside toe of levee	Cutoff Wall	SEEP				88.65							USACE?	1325 J Street, Sacramento, CA	yes	yes		
79	2.56	C	19	1266+71	2,200,600.09	6,666,626.50	39°11'40.511"N	121°37'23.859"W	12KV overhead power line crossing	Cutoff Wall	EL	OH			88.28							Pacific Gas & Electric	One Tower, Spear Tower, San Francisco, CA 94105	yes	yes		
80	2.54	C	19	1265+59	2,200,487.69	6,666,648.86	39°12'14.101"N	121°37'46.217"W	Sullivan Pump Station. 18 inch steel pipe through the levee. Pump and Gate valve in pump house on the channel bank. Concrete well on the bank. Siphon breaker in CMP riser on landside slope. (Sullivan Pump Station)	Cutoff Wall	IR(P)	18.3	70.05	71.55	88.30	78.41	81.22	87.80	82.99	pre-1955		0			yes	yes	
81	1.86	C	19	1229+41	2,197,325.05	6,668,184.53	39°11'42.843"N	121°37'26.919"W	Kewall Singh IR PS. A 16 inch steel pipe through levee. Pump in pump house on channel bank. Gate valve on the waterside end. Concrete standpipe.	Cutoff Wall	IR(P)	3.0 or deeper through levee?			87.52	77.96	80.90	87.42	82.61	pre-1955		part of orig O&M 1955		yes	yes		
82	1.80	C	19	1226+06	2,197,092.42	6,668,425.95	39°11'40.511"N	121°37'23.859"W	12 KV power pole located in landside slope	Cutoff Wall	EL	OH			87.29									yes	yes		
		C	18/19	1213+85					Reach 18/19 Transition																		
83	1.32	C	18	1200+69	2,194,694.58	6,669,169.33	39°11'46.779"N	121°37'14.542"W	Abandoned 10 inch steel pipe through levee. Waterside end open. Steel Plate welded on landward end. Pump and Standpipe at the landside end.	Cutoff Wall	IR(P)	2.8		84.55		87.80						removed	2011	Wilbur Rev & 1994 Trust Etal	P.O. Box 3730, Yuba City, CA 95992	yes	yes
84	1.20	C	18						12 KV power line in overflow and levee crossing north of Rednall Road	Cutoff Wall	EL	OH							11960, 11960A	yes, cond 13	1979	Pacific Gas & Electric	One Tower, Spear Tower, San Francisco, CA 94105				



LEVEE ENCROACHMENT LIST

APPENDIX A

Levee Mile	SBFCA Phase	SBFCA Reach	SBFCA STA	Location (NAD 83)		Location (WGS 84)		Encroachment	Proposed Levee Improvement	Required Improvement Work	Type	cover	Elevations (NGVD 1988)			Water Surface Elevation (NGVD 1988)				CVFPB Permit Information			Owner Information		verified	Picture Taken		
				Northing	Easting	Latitude	Longitude						Invert of Pipe	Top of Pipe	Top of Levee	100 Yr	200 Yr	500 Yr	DWR 1957	Permit No.	Require Permittee to Relocate	Year	Name	Address				
85	0.98	C	18	1182+75	Not Verified	Not Verified		20 Inch steel pipeline through levee (not installed) - Plans prepared by MHM Job No. 78-158	Cutoff Wall	The pipeline is appears to meet the elevation requirement over 200 year WSEL based on the record information. Type of pipe might not meet Title 23. Could not find pipeline in the field. Should be part of 30 percent but not included.	IR(A)	3.0							12634	yes, cond 13	1979	Favero Farms	600 Rednall Road, Yuba City, CA 95991	no	no			
86	0.97	C	18	1181+50	Not Verified	Not Verified		Abandoned 8 inch steel pipe through levee. Pipe plugged on the waterside toe.	Cutoff Wall	Not sure if the abandonment meets title 23 requirements. Pipe may need to be properly abandoned or completely removed. Could not find in field.	IR(A)	4.0	76.6 (USED)		77.08	80.24	86.59	81.90	pre-1955		part of orig O&M 1955			no	no			
87	0.96	C	18	1180+98	2,192,727.96	6,669,163.92	39°10'57.338"N	121°37'14.737"W	3 inch steel pipe through levee crown	Cutoff Wall	The pipeline is appears to meet the elevation requirement over 200 year WSEL based on the record information. Type of pipe might not meet Title 23. Could not find pipeline in the field.	IR(?)	1.0	86.05	86.30	87.30	77.07	80.24	86.58	81.89					yes	yes		
88	0.95	C	18	1180+50	Not Verified	Not Verified		One 12 inch steel pipe through levee. Pipe exposed on landside slope	Cutoff Wall	The pipeline is appears to meet the elevation requirement over 200 year WSEL based on the record information. Type of pipe might not meet Title 23. Could not find pipeline in the field.	IR(A)	1.0			77.06	80.23	86.57	81.89							no	no		
89	0.98	C	18	1182+75	Not Verified	Not Verified		To install an irrigation pump and a buried pipeline landward over the right bank levee of the Feather River, upstream Rednall Road. Not install per Reclamation Record.	Cutoff Wall		IR(P)								12634	yes, cond 13	1981	Favero Farms	600 Rednall Road, Yuba City, CA 95991	n/a	n/a			
90	0.80	C	18	1174+05	2,192,034.01	6,669,096.85	39°10'50.484"N	121°37'15.605"W	Water Well and Pump 20 feet from Landside toe	Cutoff Wall					87.29									yes	yes			
91	0.75	C	18	1170+04	2,191,638.99	6,669,057.61	39°10'46.581"N	121°37'16.124"W	12KV overhead power line crossing	Cutoff Wall					87.18								Pacific Gas and Electric Company	5555 Florin-Perkins Road, Sacramento, CA 95826	yes	yes		
92	0.40	C	18	1152+55	2,189,899.09	6,668,879.71	39°10'29.390"N	121°37'18.475"W	Twin 110 KV Tower line across Feather River	Cutoff Wall					86.95				3365	yes, cond 4	1960	Pacific Gas and Electric Company	5555 Florin-Perkins Road, Sacramento, CA 95826	yes	yes			
93	0.18	C	18	1138+22	2,188,574.27	6,668,732.99	39°10'16.301"N	121°37'20.408"W	12 KV and 40/60 KV power pole located in landside slope	Cutoff Wall					86.71								Pacific Gas and Electric Company	5555 Florin-Perkins Road, Sacramento, CA 95826	yes	yes		
94	0.08	C	18	1135+31	2,188,188.41	6,668,676.43	39°10'12.536"N	121°37'21.138"W	16 inch gas line through the levee. Marker post on the waterside shoulder	Cutoff Wall		GL	3.5		86.50	76.15	79.58	85.73	81.27				Pacific Gas and Electric Company	5555 Florin-Perkins Road, Sacramento, CA 95826	yes	yes		
95	16.52, 16.65 and 0.00-0.10	C	17	1133+00				Not Verified	To construct 1,180 feet of 12 kv line in the right bank overflow area of the Feather River	Cutoff Wall									12750	yes, cond. 13	1979	Pacific Gas and Electric Company	5555 Florin-Perkins Road, Sacramento, CA 95826	no	no			
Levee District No. 1 Levees /Levee District No. 9 Transition																												
1	16.65	C	18	1132+09	2,187,967.19	6,668,647.98	39°10'09.827"N	121°37'21.468"W	8-5/8" steel pipeline within railroad right-of-way parallel to tracks	Cutoff Wall		GL			84.80	76.09	79.54	85.67	81.07	3823	yes, cond 5	1961	Southern Pacific Pipe Line Co.	610 South Main Street, Los Angeles, CA	yes	yes		
2	16.65	C	18	1131+82	2,187,840.25	6,668,647.20	39°10'09.827"N	121°37'21.468"W	Fiber optic warning sign	Cutoff Wall		TL			84.80	76.09	79.54	85.67	81.07						yes	yes		
Reach 17/18 Transition																												
3	16.65	C	17	1130+47	2,187,705.38	6,668,643.93	39°10'07.716"N	121°37'21.585"W	Union Pacific Railroad Crossing. There is no stop log structure.	Cutoff Wall		RR	6.0				81.32						Union Pacific RR	1400 Douglas Stop #1640, Omaha, NE 68179	yes	yes		
4	16.60	C	17	1128+00				Not Verified	To construct a ramp on the waterside slope of the right bank levee on the Feather River adjacent to the SPRR.	Cutoff Wall		Struc								10525	yes, cond. 13	1975	Keith Boone	P.O. Box 95, Live Oak, CA 95953	no	no		
5	16.60	C	17	1127+48	2,187,405.84	6,668,629.29	39°10'04.756"N	121°37'21.787"W	Village Green Trailer Park - To install a 10 inch outfall pipe through the right bank levee of the Feather River to provide storm drainage for a mobile home park.	Cutoff Wall		SD(P)			87.90	76.02	79.48	85.59	81.01	13754	yes, cond 13	1984	Village Green Mobile Homes Park c/o Sargent and Morton	1155 Pease Road, Yuba City, CA 95991-8814	yes	yes		
6	16.56	C	17	1125+00				Not Verified	To retain an existing irrigation well in the right bank overflow area of the Feather River.	Cutoff Wall		Well								12759	yes, cond. 13	1979	DiFiore Ranches	5028 Carlson Road, Yuba City, CA 95991	no	no		
7	16.29	C	17	1111+46	2,185,808.02	6,668,723.59	39°09'48.957"N	121°37'20.672"W	North Yuba City Drainage Area. 16 Inch welded steel 7 GA asphalt coated storm drain discharge pipe over levee connected to 24 inch pipe in overflow area, outfall ditch, and pipes in floodway	Cutoff Wall		SD(P)	1.1	83.17	84.50	85.60	75.75	79.21	85.29	80.77	14420	no	1986	City of Yuba City	1201 Civic Center Blvd., Yuba City, CA 95991	yes	yes	
8	16.20	C	17	1107+82	2,185,444.63	6,668,754.75	39°09'45.365"N	121°37'20.297"W	12 KV crossing & power pole located in landside slope	Cutoff Wall		EL	OH			86.09								Pacific Gas & Electric	One Tower, Spear Tower, San Francisco, CA 94105	yes	yes	
9	16.01	C	17				39°09'35.29"N	121°37'15.71"W	To install an intertie to an existing waste water line and abandon approximately 40 feet of 24 inch diameter pipe on the right bank of the Feather River.	Cutoff Wall		RW(P)	4.0							15331	no	1989	City of Yuba City	1201 Civic Center Blvd., Yuba City, CA 95991	yes	yes		
10	16.01	C	17	1096+81	2,184,404.96	6,669,131.69	39°09'35.073"N	121°37'15.566"W	Yuba City Water Treatment Plant 28" (29 25/32" OD) 7 GA welded steel waterline pipe crossing of levee. New permit included installation of automatic drainage gates on pipelines. (copy of record drawings)	Cutoff Wall		RW(P)	5.0	81.05 rd	83.6 est	87.70	75.61	79.08	85.16	80.62	5758 & 6016 & 13957 & 13593 & 15330	yes, cond 13	1967 & 1968 & 1984 & 1983 & 1989	City of Yuba City	1201 Civic Center Blvd., Yuba City, CA 95991	yes	yes	
11	16.01	C	17	1096+71	2,184,406.70	6,669,130.73	39°09'35.090"N	121°37'15.578"W	Yuba City Water Treatment Plant 24" 7 GA welded steel waterline pipe crossing of levee. New permit included installation of automatic drainage gates on pipelines. (copy of record drawings)	Cutoff Wall		RW(P)	4.7	81.80 rd	83.8 est	87.80	75.61	79.08	85.16	80.62	5758 & 6016 & 13957 & 13593 & 15330	yes, cond 13	1967 & 1968 & 1984 & 1983 & 1989	City of Yuba City	1201 Civic Center Blvd., Yuba City, CA 95991	yes	yes	
12	16.01	C	17	1096+62	2,184,416.62	6,669,124.90	39°09'35.189"N	121°37'15.652"W	Yuba City Water Treatment Plant 42" cement mortar lined and coated welded steel pipe waterline crossing of levee (copy of record drawings)	Cutoff Wall		RW(P)	2.5	82.50 rd	86.1 est	88.40	75.61	79.08	85.16	80.61	17977	yes, cond 28	2005	City of Yuba City	1201 Civic Center Blvd., Yuba City, CA 95991	yes	yes	
13	16.00	C	17	1096+74	2,184,416.62	6,669,124.90	39°09'35.189"N	121°37'15.652"W	To install a 12 kv aerial pole line extension across the right bank levee of the Feather River. The pole line shall serve the Yuba City Water treatment Plant intake pump station	Cutoff Wall		EL	OH			88.30					6067	yes, cond 5	1968	Pacific Gas & Electric	One Tower, Spear Tower, San Francisco, CA 94105	yes	yes	
Reach 16/17 Transition																												
14	15.68	C	16	1079+91	2,183,133.99	6,670,212.82			8 inch Gas Line	Flatten Waterside Slope		GL	3.5			75.51	78.99	85.03	80.36					Pacific Gas & Electric	One Tower, Spear Tower, San Francisco, CA 94105	yes	yes	
15	15.56	C	16	1073+41	2,182,671.85	6,670,670.15	39°09'17.878"N	121°36'56.126"W	16 inch Gas Line (PG&E Map shows the gas main as 12 inch)	Flatten Waterside Slope		GL	3.5			85.65	75.51	78.99	85.03	80.21					Pacific Gas & Electric	One Tower, Spear Tower, San Francisco, CA 94105	yes	yes
16	15.15	C	16	1054+75	2,181,074.23	6,671,588.96	39°09'02.048"N	121°36'44.548"W	Telephone Call box on landside hinge point	Flatten Waterside Slope		TL				86.66										yes	yes	
17	14.98	C	16	1043+52	not verified			not verified	Abandon 36 inch pipe	Flatten Waterside Slope		SS(A)									pre-1955					part of orig O&M 1955	no	no







LEVEE ENCROACHMENT LIST

APPENDIX A

Levee Mile	SBFCA Phase	SBFCA Reach	SBFCA STA	Location (NAD 83)		Location (WGS 84)		Encroachment	Proposed Levee Improvement	Required Improvement Work	Type	cover	Elevations (NGVD 1988)			Water Surface Elevation (NGVD 1988)				CVFPB Permit Information			Owner Information		verified	Picture Taken	
				Northing	Easting	Latitude	Longitude						Invert of Pipe	Top of Pipe	Top of Levee	100 Yr	200 Yr	500 Yr	DWR 1957	Permit No.	Require Permittee to Relocate	Year	Name	Address			
54	14.22	C	16	1000+55				Not Verified	City of Yuba City. To replace the existing retaining wall with an 8 foot high, 76 foot long concrete retaining wall on the landside of the right (east) bank levee of Feather River.	Flatten Waterside Slope										16844	yes. Cond 27	1998	City of Yuba c/o Parks and Recreation	1201 Civic Center Blvd., Yuba City, CA 95993	no	no	
55	14.23	C	16					Not Verified	Authorize a 3-wire barded wire fence and two mature trees at the landward toe. The project is located at 563 Second Street	Flatten Waterside Slope										16449	yes. Cond 18	1996	Levee District No. 1	430 Second Street, Yuba City, CA 95991	no	no	
56	14.17	C	16					Not Verified	Authorize a 3-wire barded wire fence with a gate within 5 feet of the levee toe and two mature trees at the landward toe. The project is located on Keyser Street	Flatten Waterside Slope										16448	yes. Cond 17	1996	Levee District No. 1	430 Second Street, Yuba City, CA 95991	no	no	
57	14.13	C	16					Not Verified	Authorize a 120 foot long building at the landward toe	Flatten Waterside Slope										16447	no	1996	Rodney and Eleanor Fletcher	511 Second Street, Yuba City, CA 95991	no	no	
58	14.04	C	16					Not Verified	To excavate 25 feet into landward side of the right bank of the Feather River and construct a concrete retaining wall to provide parking lot space. The project is located at 463 2nd Street behind the Sutter County Administration Building	Flatten Waterside Slope	Struc									13951 and 13951 (revised)	yes. Cond 13 (original) and no (revised)	1984 & 1996 (revised)	County of Sutter	1160 Civic Center Boulevard, Yuba City, CA 95993	no	no	
59	14.01	C	16	993+50				Not Verified	Authorize a building near the landward toe of the levee.	Flatten Waterside Slope										16446	yes. Cond 16	1996	Dolores Scott	160 C Street, Yuba City, CA 95991	no	no	
60	13.84-14.01	C	16	993+56				Not Verified	To install approximately 1,010 feet of 8 foot high chain link fence on the waterside side of the right bank levee of the Feather River.	Flatten Waterside Slope										16499	no	1997	Levee District No. 1	430 Second Street, Yuba City, CA 95991	no	no	
61	13.98	C	16					Not Verified	Authorize a shed, concrete wall, and chain-link fence with gate at landward toe. The permit also covers two steel posts on the shoulder and seventeen mature trees on the landward slope.	Flatten Waterside Slope										16445	yes. Cond 18	1996	Joe and Patricia Benatar	423 Second Street, Yuba City, CA 95991	no	no	
62	13.96	C	16					Not Verified	Authorize a shed at the landward toe	Flatten Waterside Slope										16444	yes. Cond 16	1996	Lois Murphy Brown	413 Second Street, Yuba City, CA 95991	no	no	
63	13.95	C	16					Not Verified	Authorize a two-story garage and shop building at the landward toe and six mature trees on the landward slope	Flatten Waterside Slope										16443	no	1996	Marjorie Von Geldern	407 Second Street, Yuba City, CA 95991	no	no	
64	13.94	C	16					Not Verified	Authorize a building at the landward toe and 21 mature trees and sprinkler system on the landward slope.	Flatten Waterside Slope										16442	no	1996	Max and Sandra McClendon	379 Second Street, Yuba City, CA 95991	no	no	
65	13.93	C	17	988+05	2,175,065.02	6,673,942.87			3 inch steel pipe, does not appear to cross levee anymore	Cutoff Wall					74.40	77.54	82.89	78.21						unknown		no	no
66	13.93	C	16					Not Verified	Authorize a garage and a shed at the landward toe	Flatten Waterside Slope										16441	yes. Cond 16	1996	Howard and Raona Hall	373 Second Street, Yuba City, CA 95991	no	no	
67	13.91	C	16					Not Verified	Authorize a small building, a chain-link fence, four mature trees at the landward toe, and five clumps of oleanders on the landward slope.	Flatten Waterside Slope										16440	yes. Cond 20	1996	Est. James Barr	365 Second Street, Yuba City, CA 95991	no	no	
68	13.90	C	16					Not Verified	Authorize a small building and a chain link fence on an existing retaining wall at the landward toe, concrete stairs, a steel pipe frame, and two large mature trees on the landward slope. A hose bib on the landward shoulder of the right bank of levee.	Flatten Waterside Slope										16439	no	1996	Mark Poole	355 Second Street, Yuba City, CA 95991	no	no	
69	13.88	C	16					Not Verified	Authorize a see-through fence on a 5 foot retaining wall, steps, and nine mature trees on the landward slope.	Flatten Waterside Slope										16438	yes. Cond 20	1996	Charles and Jean Sanders	349 Second Street, Yuba City, CA 95991	no	no	
70	13.87	C	16					Not Verified	Authorize concrete steps with railing and pomegranate bush on landward slope. The permit also covers a concrete retaining wall at the landward toe.	Flatten Waterside Slope										16437	yes. Cond 16	1996	Theodore and Mary Wilkins	341 Second Street, Yuba City, CA 95991	no	no	
71	13.86	C	16					Not Verified	Authorize Chain Link fence with gate, three oleander trees, and steps within the landward slope.	Flatten Waterside Slope										16436	yes. Cond 18	1996	Glenn and Jean Koball	335 Second Street, Yuba City, CA 95991	no	no	
72	13.84	C	16					Not Verified	Authorize Chain Link fence with gate, three oleander trees, and steps within the landward slope.	Flatten Waterside Slope										16435	yes. Cond 21	1996	Steve and Nancy Albrecht	329 Second Street, Yuba City, CA 95991	no	no	
73	13.81	C	16					Not Verified	Authorize building, barbed wire fence, and ten trees at landward toe	Flatten Waterside Slope										16434	yes. Cond 21	1996	Dennis Coakley	306 West 24th Avenue, San Mateo, CA 94403	no	no	
74	13.77	C	16					Not Verified	Authorize a 60 foot long see-through board fence and 75 foot long clothesline and landward toe. A shed 5 feet from landward toe and a mature oak tree on the landward slope.	Flatten Waterside Slope										16433	yes. Cond 17	1996	Ronald Souza	1550 Elizabeth Lane, Yuba City, CA 95993	no	no	
75	13.76	C	16					Not Verified	Authorize a chain-link fence with gate within 10 feet of landward toe	Flatten Waterside Slope										16432	yes. Cond 19	1996	Stevenson Family Trust	459-1/2 Palora Avenue, Yuba City, CA 95991	no	no	
76	13.75	C	16					Not Verified	Authorize a see-through fence and storage shed within 10 feet of the landward toe. The project is located at 265 Second Street, Yuba City, CA	Flatten Waterside Slope										16431	yes. Cond 17	1996	Margaret Kellett	265 Second Street, Yuba City, CA 95991	no	no	
77	13.74	C	16					Not Verified	Authorize a see-through fence and storage shed within 5 feet of the landward toe. The project is located at 261 Second Street, Yuba City, CA	Flatten Waterside Slope										16430	yes. Cond 19	1996	Ernest Sandoval	22301 Dersch Road, Anderson, CA 96007	no	no	
78	13.73	C	16					Not Verified	Authorize a Chain Link fence with gate within 5 feet of landward toe, a cedar tree at the landward toe, and stone steps on the landward slope. This project is located at 255 Second Street.	Flatten Waterside Slope										16429	yes. Cond 17	1996	Teresa Filby	2072 Sanborn, Yuba City, CA 95993	no	no	
79	13.68	C	16					Not Verified	Authorize a shed and three trees at the landward toe of the right bank levee of the Feather River. The project is located at 225 Second Street, Yuba City, CA 95991	Flatten Waterside Slope										16428	no	1996	Minnie and Marvin Cole	2061 Royo Rancho Road, Yuba City, CA 95993	no	no	
80	13.67	C	16					Not Verified	Authorize a 6 foot high chain link fence and gate at the right bank levee of the Feather River	Flatten Waterside Slope										16427	yes. Cond 17	1996	Dossie and Wanda Smith	219 Second Street, Yuba City, CA 95991	no	no	
81	13.65	C	16					Not Verified	Authorize a residence within 5 feet of the landward toe	Flatten Waterside Slope										16426	yes. Cond 16	1996	Ronald Brockman	209 Second Street, Yuba City, CA 95991	no	no	
82	13.64	C	16					Not Verified	Authorize a residence at landward toe and oak on the landward slope	Flatten Waterside Slope										16425	no	1996	Carl and Sandra Stout	201 Second Street, Yuba City, CA 95991	no	no	
83	13.55	C	16	975+00				Not Verified	To construct a restroom facility with septic tank and leach lines at the Yuba City Boat Ramp on the right bank of the Feather River.	Flatten Waterside Slope										10967	yes, cond 13	1976	County of Sutter	1160 Civic Center Blvd., Suite D, Yuba City, CA 95993			
84	13.53	C	16	972+00				Not Verified	To construct improvement for the boat launching ramp and related facilities on the right bank of the Feather River.	Flatten Waterside Slope										2623	yes, cond 4	1957	Department of Fish and Game		no	no	
85	13.53	C	16	972+00				Not Verified	To construct improvement for the Yuba City Boat Ramp consisting of a paved parking area, restroom facilities, floating boat dock and extension of concrete boat ramp on the right bank of the Feather River.	Flatten Waterside Slope										5741, 11989	no	1991	County of Sutter	1160 Civic Center Blvd., Suite D, Yuba City, CA 95993			
86	13.53	C	16	972+00				Not Verified	To reconstruct an existing access road to the Yuba-Sutter Boat Ramp on the right bank of the Feather River	Flatten Waterside Slope										9294	yes, cond 13	1974	County of Sutter	1160 Civic Center Blvd., Suite D, Yuba City, CA 95993			
87	13.53	C	16	972+00				Not Verified	To maintain and operate existing boat dock for public use for boating, fishing, and a campground with related facilities including a mobile home on the right bank of the Feather River.	Flatten Waterside Slope										10830, 15741	yes, cond 13	1978	William Baldner	80 2nd Street, Yuba City, CA 95991			
		C	15/16	968+50					Reach 15/16 Transition																		
88		C	15	968+00				Not Verified	To construct 120 lineal feet of sheet piles retaining wall, and nine 10 x 10 foot boat docks supported by seven 12 inc diameter steel piles to an existing 30 foot wide ramp (Yuba City Boat Ramp)	Cutoff Wall											17230	yes. Cond 26	2000	County of Sutter	1160 Civic Center Boulevard, Yuba City, CA 95993		
		C	14/15	954+40					Reach 14/15 Transition																		
89		C	14					Not Verified	12 kv cable	No Rehabilitation Required																	



LEVEE ENCROACHMENT LIST

APPENDIX A

Levee Mile	SBFCA Phase	SBFCA Reach	SBFCA STA	Location (NAD 83)		Location (WGS 84)		Encroachment	Proposed Levee Improvement	Required Improvement Work	Type	cover	Elevations (NGVD 1988)			Water Surface Elevation (NGVD 1988)				CVFPB Permit Information			Owner Information		verified	Picture Taken	
				Northing	Easting	Latitude	Longitude						Invert of Pipe	Top of Pipe	Top of Levee	100 Yr	200 Yr	500 Yr	DWR 1957	Permit No.	Require Permittee to Relocate	Year	Name	Address			
	C	13/14	927+00					Reach 13/14 Transition																			
90	12.50-13.07	C	15	925+00			Not Verified	To construct access ramps	Cutoff Wall	Located within floodway. Does not affect levee project.									7460A		1974	County of Sutter	1160 Civic Center Boulevard, Yuba City, CA 95993				
90	12.51	C	13	913+19	2,168,046.21	6,673,496.81	39°06'53.190"N	121°36'21.046"W	Two 16 inch gas lines. (PG&E map shows the gas lines as 12 inch)	Cutoff Wall and relief wells at 200 foot and 65 feet deep	The pipeline is appears to meet the elevation requirement over 200 year WSEL based on the record information and type of pipe might appears to meet Title 23. Appears no work required.	GL	3.0			82.00	72.16	75.17	80.17	77.14				Pacific Gas & Electric	One Tower, Spear Tower, San Francisco, CA 94105	yes	yes
91	12.15	C	13	894+23	2,166,221.70	6,673,147.49	39°06'35.171"N	121°36'25.578"W	To install a 12kv buried power cable through the right bank levee and across the right bank overflow of the Feather River, a total distance of 896 feet. Poles will be installed near the top of the banks of the low water channel and aerial cable will be placed between the two poles which will be connected to the underground cable.	Cutoff Wall and relief wells at 200 foot and 65 feet deep		EL	UG								12407	yes, cond. 13	1978	Pacific Gas and Electric Company	One Tower, Spear Tower, San Francisco, CA 94105	no	no
92	12.14	C	13	893+84	2,166,181.41	6,673,142.43	39°06'34.772"N	121°36'25.614"W	Garden Highway Industrial Park. To install a 12 inch steel storm drain pipeline through the right bank levee of the Feather River	Cutoff Wall and relief wells at 200 foot and 65 feet deep	The pipeline is appears to meet the elevation requirement over 200 year WSEL based on the record information and type of pipe might appears to meet Title 23. Appears no work required. We have as-built drawings.	SD(P)	3.3	77.70	78.70	82.00	71.72	74.77	79.80	76.93	12827	yes, cond. 13	1979	City of Yuba City	1201 Civic Center Blvd., Yuba City, CA 95991	yes	yes
93	12.12	C	13	893+78	2,166,175.45	6,673,142.43	39°06'34.772"N	121°36'25.614"W	Burns Drive Storm Water Pump Station. 16 inch steel storm drain discharge pipe through levee.	Cutoff Wall and relief wells at 200 foot and 65 feet deep	The pipeline is appears to meet the elevation requirement over 200 year WSEL based on the record information and type of pipe might appears to meet Title 23. Appears no work required. We have as-built drawings.	SD(P)	2.7	77.97	79.30	82.00	71.72	74.77	79.80	76.93	15863	?	1992	City of Yuba City	1201 Civic Center Blvd., Yuba City, CA 95991	yes	yes
94	11.90	C	13	881+41	2,164,942.19	6,673,036.13	39°06'22.535"N	121°36'27.067"W	Levee District No. 1 Relief Well Pump Station 6" and 14" pipes located just southeast of the Waste Water Treatment Plant	Cutoff Wall and relief wells at 200 foot and 65 feet deep	The pipeline is appears to meet the elevation requirement over 200 year WSEL based on the record information and type of pipe appears to meet Title 23. The cover over pipe is questionable. Appears no work required but need to pothole to verify.	RW(P)	5.1	75.23	76.40	81.50	71.49	74.54	79.57	76.79				Levee District No. 1	243 Second Street, Yuba City, CA 95991	yes	yes
95	11.43	C	13	856+23	2,162,702.52	6,674,085.34	39°06'05.587"N	121°36'18.675"W	South Yuba City Storm Drainage Pump Station 24 inch 7 GA Steel Pipe asphalt coated and wrapped with asphalt saturated felt discharge pipe	Cutoff Wall and relief wells at 200 foot and 65 feet deep	The pipeline is appears to meet the elevation requirement over 200 year WSEL based on the record information and type of pipe might appears to meet Title 23. Appears no work required. We have as-built drawings.	SD(P)	5.2	76.80	78.80	82.00	70.94	74.02	79.04	76.38	15565	no	1992	City of Yuba City	1201 Civic Center Blvd., Yuba City, CA 95991	yes	yes
96	11.43	C	13	856+08	2,162,689.81	6,674,093.30	39°06'05.587"N	121°36'18.675"W	South Yuba City Seepage Interceptor Pump Station 24 inch 7 GA Steel Pipe asphalt coated and wrapped with asphalt saturated felt discharge pipe	Cutoff Wall and relief wells at 200 foot and 65 feet deep	The pipeline is appears to meet the elevation requirement over 200 year WSEL based on the record information and type of pipe might appears to meet Title 23. Appears no work required. We have as-built drawings.	SD(P)	5.2	76.80	78.80	82.00	70.94	74.01	79.03	76.37	15565	no	1992	City of Yuba City	1201 Civic Center Blvd., Yuba City, CA 95991	yes	yes
97	11.24-11.95	C	13					Seepage Interceptor Trench and additional relief wells. The improvements were adjacent to the River Oaks subdivision between the wastewater treatment plant and Shanghai Road. All work on landside of levee.	Cutoff Wall and relief wells at 200 foot and 65 feet deep																		
98	10.80-16.00	C	16				Not Verified	Bike Path below Twin Cities Memorial Bridge	Flatten Waterside Slope		Road																
		C	12/13	845+00				Reach 12/13 Transition																			
99	10.60-11.15		12					Shanghai Bend Road Setback levee project	No Rehabilitation Required																		
		B	11/12	830+00				Reach 11/12 Transition																			
100	10.57	B	11	828+55	2,160,267.77	6,675,134.01	39°05'36.240"N	121°36'00.697"W	City of Yuba City Sewer 24 inch welded steel pipe mortar lined and coated pipe (wall thickness 0.188" min) Discharge Pipe to river diffuser	Cutoff Wall	The pipeline is appears to meet the elevation requirement over 200 year WSEL based on the record information and type of pipe might appears to meet Title 23. Appears no work required. We have as-built drawings.	WW(P)	2.3	75.70 rd	77.8 est	79.80	69.02	72.20	77.24	75.15	7151D	yes, cond 13?	1974	City of Yuba City	1201 Civic Center Blvd., Yuba City, CA 95991	yes	yes
101	10.47	B	11				Not Verified	To place an 18 inch storm drain pipeline through the levee on the right bank of the Feather River (project was not completed - no pipeline installed)	Cutoff Wall																		
	9.55	B	10/11	774+00				Reach 10/11 Transition																			
102	9.50	B	10				Not Verified	Construct gauging station 150 feet downstream of Shanghai Bend	Cutoff Wall																		
103	9.11	B	10	750+40	2,152,869.21	6,673,338.66	39°04'23.178"N	121°36'23.886"W	115 kv steel tower transmission line crossing of levee	Cutoff Wall		EL	OH														
104	9.10	B	10	750+10	2,152,823.05	6,673,332.24	39°04'22.722"N	121°36'23.970"W	12 kv power line crossing of levee	Cutoff Wall		EL															
	8.27	B	9/10	706+50				Reach 9/10 Transition																			
105	8.00	B	9	692+00			Not Verified	To construct 140 lineal feet of sheet piles retaining wall, and nine 10 x 20 foot boat docks supported by seven 12 inch diameter steel piles to an existing 30 foot wide ramp (Boyd Pump Boat Ramp)	Cutoff Wall	Located within floodway. Does not affect levee project.																	
106	7.94	B	9	692+00			Not Verified	To improve the existing Boyd Pump Boat Launching Facility by widening the existing ramp to 30 feet with 4 foot walkways on each side, paving existing access road, and expanding parking area by 25 spaces, and placing riprap on the right bank of the Feather River.	Cutoff Wall		Struc																
107	7.94	B	9	692+00			Not Verified	To construct boat launching ramp, well, pump, pressure system, and sanitary facilities on the right bank overflow of the Feather River	Cutoff Wall		Struc																
108	7.94	B	9	689+09	2,146,949.33	6,672,031.04	39°03'24.759"N	121°36'40.813"W	Oswald Mutual Water Company (Boyd's Pump) 18 inch epoxy coated mortar lined steel pipe through existing 24 inch concrete pipe crossing of levee	Cutoff Wall	The pipeline does not meet title 23 requirements and will need a positive shut-off structure installed and gate valve at pump. Pumping up and over levee does not appear to be feasible.	IR(P)	27.6	46.00	48.20	75.80	65.22	68.52	73.36	70.91	pre-1955 & 18181	yes, cond 29	part of orig O&M 1955 & 2007	Oswald Mutual Water Company	Yuba City, CA 95991	yes	yes
109	7.94	B	9	689+00	2,146,953.52	6,672,029.11	39°03'24.759"N	121°36'40.813"W	To replace an existing pole line with a new pole line across the right bank levee of the Feather River. A new pole will be placed 10 feet landward of the landward toe of the levee and another pole will be placed 24 feet water ward of the water ward toe of the levee.	Cutoff Wall		EL	OH														
110	7.94	B	9	689+00	2,146,953.52	6,672,029.11	39°03'24.759"N	121°36'40.813"W	To place a service line on a PG&E pole crossing the right bank levee of the Feather River	Cutoff Wall		TL	OH														
111	7.47	B	9	664+07	2,144,450.88	6,672,127.42	39°03'00.186"N	121°36'39.792"W	Sierra Gold Nursery. An 8 inch steel pipe through levee. This pipe was pressure checked and in 1984 as part of permit 13980 to connect to existing pipe.	Cutoff Wall	Not sure if the pipeline meets the elevation requirement over 200 year WSEL. The type of pipe may or may not meet Title 23. Need to pothole to verify.	SD(P)	3.6	70.23	70.90	74.50	64.57	67.89	72.68	69.90	pre-1955 & 13980	yes, cond 13	part of orig O&M 1955 & 1984	Sierra Gold Nursery	5320 Garden Highway, Yuba City, CA 95991	yes	yes
112	7.40-7.64	B	9	664+20			Not Verified	To reconstruct and pave a 12 foot wide, approximately 1370 feet long road on the landside toe of the right bank levee of the Feather River	Cutoff Wall																		
	7.29	B	8/9	654+75				Reach 8/9 Transition																			
113	7.18	B	8	649+11	2,142,954.74	6,672,128.18	39°02'45.228"N	121°36'39.774"W	12 kv power line across levee 1900 feet downstream of Mesick Road	Cutoff Wall		EL	OH														



LEVEE ENCROACHMENT LIST

APPENDIX A

Levee Mile	SBFCA Phase	SBFCA Reach	SBFCA STA	Location (NAD 83)		Location (WGS 84)		Encroachment	Proposed Levee Improvement	Required Improvement Work	Type	cover	Elevations (NGVD 1988)			Water Surface Elevation (NGVD 1988)			CVFPB Permit Information			Owner Information		verified	Picture Taken				
				Northing	Easting	Latitude	Longitude						Invert of Pipe	Top of Pipe	Top of Levee	100 Yr	200 Yr	500 Yr	DWR 1957	Permit No.	Require Permittee to Relocate	Year	Name			Address			
114	7.16	B	8	647+74	2,142,830.08	6,672,119.48	39°02'43.998"N	121°36'39.919"W	Feather Water District North Pump Station 1-26" irrigation discharge pipes	Cutoff Wall	The pipeline appears to meet the elevation requirement over 200 year WSEL. May not meet 1957 profile requirement. The type of pipe may or may not meet Title 23. Appears no work required.	IR(P)	1.6	69.90	71.90	73.50	64.28	67.60	72.36	69.33	4127	yes, cond 5	1962	Feather Water District	280 Wilkie Avenue, Yuba City, CA 95991	yes	yes		
115	7.16	B	8	647+70	2,142,826.16	6,672,118.89	39°02'43.961"N	121°36'39.926"W	Feather Water District North Pump Station 1-26" irrigation discharge pipes	Cutoff Wall	The pipeline appears to meet the elevation requirement over 200 year WSEL. The type of pipe may or may not meet Title 23. Appears no work required.	IR(P)	1.3	70.15	72.15	73.50	64.28	67.60	72.36	69.33	4127	yes, cond 5	1962	Feather Water District	280 Wilkie Avenue, Yuba City, CA 95991	yes	yes		
116	7.16	B	8	647+66	2,142,822.01	6,672,118.27	39°02'43.917"N	121°36'39.942"W	Feather Water District North Pump Station 1-26" irrigation discharge pipes	Cutoff Wall	The pipeline appears to meet the elevation requirement over 200 year WSEL. May not meet 1957 profile requirement. The type of pipe may or may not meet Title 23. Appears no work required.	IR(P)	1.4	70.10	72.10	73.50	64.28	67.60	72.36	69.33	4127	yes, cond 5	1962	Feather Water District	280 Wilkie Avenue, Yuba City, CA 95991	yes	yes		
117	7.16	B	8	647+61	2,142,817.52	6,672,117.60	39°02'43.870"N	121°36'39.951"W	Feather Water District North Pump Station 1-26" irrigation discharge pipes	Cutoff Wall	The pipeline appears to meet the elevation requirement over 200 year WSEL. The type of pipe may or may not meet Title 23. Appears no work required.	IR(P)	1.3	70.15	72.15	73.50	64.28	67.60	72.36	69.33	4127	yes, cond 5	1962	Feather Water District	280 Wilkie Avenue, Yuba City, CA 95991	yes	yes		
118	6.69	B	8	622+79	2,140,350.59	6,671,955.66	39°02'19.494"N	121°36'42.102"W	12 kv power line across levee	Cutoff Wall		EL	OH								4003		1962	Pacific Gas & Electric	One Tower, Spear Tower, San Francisco, CA 94105	yes	yes		
	6.41	B	7/8	596+00					Reach 7/8 Transition																				
119	6.35	B	7	592+67	2,137,447.24	6,671,791.94	39°01'50.802"N	121°36'44.334"W	12 kv power line across levee	565+00 to 596+00 Cutoff Wall		EL	OH								4530	yes, cond 5	1963	Pacific Gas & Electric	One Tower, Spear Tower, San Francisco, CA 94105	yes	yes		
120	6.00	B	7	587+00	2,136,925.70	6,671,619.94	39°01'45.654"N	121°36'46.542"W	Spur Levee upstream of Abbott Lake	565+00 to 598+87 Cutoff Wall											3787 and 4254	yes, cond 5	1961 and 1963	C.E. Sullivan	5320 Garden Highway, Yuba City, CA 95991	yes	yes		
121	5.5 - 6.2	B	7	560+00					Not Verified	To fill in approximately one mile of an existing irrigation ditch at the waterside toe of the right bank of the Feather River.	510+37 to 546+00 Cutoff Wall	Struc									14717	no	1987	Department of Fish and Game	1701 Nimbus Road, Ranch Cordova, CA 95670				
122	5.50	B	7	560+00					Not Verified	To construct a water well with a 14 inch casing in the right bank overflow of the Feather River at Abbott Lake	510+37 to 546+00 Cutoff Wall	Struc									12837	yes, cond. 13	1980	A.S. Cozzolino	9 Cozzolino Drive, Millbrae, CA 94030	no	no		
123	5.50	B	7	560+00					Not Verified	To extend approximately 2,500 of 12kv electric service line in the right bank overflow area of the Feather River near Abbott Lake to serve #3 HP Ax Pump for A.S. Cozzolino.	510+37 to 546+00 Cutoff Wall	EL	OH								12832	yes, cond. 13	1980	Pacific Gas & Electric Company	5555 Florin-Perkins Road, Sacramento, CA 95826	no	no		
124	5.22	B	7	545+41	2,132,940.57	6,672,317.26	39°01'06.071"N	121°36'37.818"W	Crushed CMP Riser in Land Side Slope. Possible location of 8 inch steel pipe.	510+37 to 546+00 Cutoff Wall	Not sure if the abandonment meets title 23 requirements. Pipe may need to be properly abandoned or completely removed.	IR(A)	3.1	67.33	68.00	71.10	63.16	66.46	71.05	67.11	pre-1955		part of orig O&M 1955					yes	yes
125	5.05	B	7	536+73	2,132,153.19	6,672,681.57	39°00'58.434"N	121°36'33.248"W	Existing 10 inch steel pipe. Removed in 1964 by Levee District No. 1 as part of permit 4775	510+37 to 546+00 Cutoff Wall	Not sure if the abandonment meets title 23 requirements. Pipe may need to be properly abandoned or completely removed.	IR(P)									pre-1955 and 4775	yes, cond 5	part of orig O&M 1955	Levee District No. 1	243 Second Street, Yuba City, CA 95991	yes	yes		
126	5.05	B	7	536+64	2,132,149.73	6,672,692.81			5 inch steel drainage pipe	510+37 to 546+00 Cutoff Wall	Not sure if the pipeline meets the elevation requirement over 200 year WSEL. The type of pipe may or may not meet Title 23. Need to pothole to verify.	SD(P)	2.0			70.50	63.04	66.34	70.91	66.94	2161	yes, cond 5	1955	C.E. Sullivan	5320 Garden Highway, Yuba City, CA 95991	no	no		
127	4.91	B	7	529+47	2,131,549.40	6,673,081.12			Abandon 6 inch pipe	510+37 to 546+00 Cutoff Wall	Not sure if the abandonment meets title 23 requirements. Pipe may need to be properly abandoned or completely removed.	IR(A)	4.0			70.60	62.95	66.25	70.81	66.72	pre-1955		part of orig O&M 1955				no	no	
128	4.50 - 5.25	B	7							Seepage Interceptor Trench for Star Bend Relief Well Pumps	510+37 to 546+00 Cutoff Wall														USACE	1325 J Street, Sacramento, CA	yes	yes	
129	4.50	B	7	512+08	2,130,379.55	6,674,329.99	39°00'40.852"N	121°36'12.526"W	Corp of Engineers Star Bend Road Relief Well Pump Station north 15" Steel Discharge Pipe Crossings	510+37 to 546+00 Cutoff Wall	The pipeline meets the elevation requirement over 200 year WSEL based on the as-built information and type of pipe meets Title 23 requirements. Does not require any work. It does not meet 1957 criteria	SD(P)	3.8	66.15	67.40	71.20	62.77	66.06	70.59	66.37	no permit issued	no		USACE	1325 J Street, Sacramento, CA	yes	yes		
130	4.50	B	7	512+04	2,130,375.66	6,674,332.71	39°00'40.814"N	121°36'12.492"W	Corp of Engineers Star Bend Road Relief Well Pump Station south 15" Steel Discharge Pipe Crossings	510+37 to 546+00 Cutoff Wall	The pipeline meets the elevation requirement over 200 year WSEL based on the as-built information and type of pipe meets Title 23 requirements. Does not require any work. It does not meet 1957 criteria	SD(P)	3.7	66.25	67.50	71.20	62.77	66.06	70.59	66.37	no permit issued	no		USACE	1325 J Street, Sacramento, CA	yes	yes		
131	4.50	B	7	510+97	2,130,288.81	6,674,393.77	39°00'39.904"N	121°36'11.680"W	12 kv power line crossing of levee	510+37 to 546+00 Cutoff Wall		EL	OH								5072	yes, cond 5	1965	Pacific Gas & Electric	One Tower, Spear Tower, San Francisco, CA 94105	yes	yes		
	4.49	B	6/7	510+37					Reach 6/7 Transition																				
132	4.0 - 4.19		6	510+50					Not Verified	To retain a 12 kv overhead service line and four power poles in the right bank overflow area of the Feather River.	No Rehabilitation Required	EL	OH								15786	no	1992	Pacific Gas & Electric	One Tower, Spear Tower, San Francisco, CA 94105	yes	yes		
133	4.48		6	510+36	2,130,239.19	6,674,428.41	39°00'39.435"N	121°36'11.304"W	Volcano Vista Farms 18 inch steel irrigation discharge pipe crossing of levee	No Rehabilitation Required	The pipeline meets the elevation requirement over 200 year WSEL based on the as-built information and type of pipe meets Title 23 requirements. Does not require any work.	IR(P)	4.0	68.08 rd	69.6 est	73.64	62.75	66.05	70.57	66.35	18438	yes, cond 19	2009	Volcano Vista Farms	P.O. Box 9, Meridian, CA 95957	yes	yes		
134	4.08		6	510+30						To install 20 hp irrigation pump and to retain an existing walnut orchard (35 acres) all on the right bank of the Feather. Now owned by Volcano Vista Farms and located on Tudor Mutual Pump Station (religated pipeline part of permit 18438).	No Rehabilitation Required	IR(P)									10551	yes, cond 13	1975	John R. Johnson/M.L. Gilbertson	8104 Garden Highway, Yuba City, CA 95991	no	no		
135	4.48		6	510+25	2,130,230.41	6,674,434.54	39°00'39.345"N	121°36'11.232"W	Tudor Mutual Water Company North 30 inch steel irrigation discharge pipes crossing of levee	No Rehabilitation Required	The pipeline meets the elevation requirement over 200 year WSEL based on the as-built information and type of pipe meets Title 23 requirements. Does not require any work.	IR(P)	4.2	66.92 rd	69.5 est	73.68	62.75	66.05	70.57	66.35	18437	yes, cond 19	2009	Tudor Mutual Water Company	280 Wilkie Avenue, Yuba City, CA 95991	yes	yes		
136	4.48		6	510+20	2,130,222.24	6,674,437.45	39°00'39.306"N	121°36'11.196"W	Tudor Mutual Water Company South 30 inch steel irrigation discharge pipes crossing of levee	No Rehabilitation Required	The pipeline meets the elevation requirement over 200 year WSEL based on the as-built information and type of pipe meets Title 23 requirements. Does not require any work.	IR(P)	4.1	66.92 rd	69.5 est	73.57	62.75	66.05	70.57	66.35	18437	yes, cond 19	2009	Tudor Mutual Water Company	280 Wilkie Avenue, Yuba City, CA 95991	yes	yes		
	4.27		6						levee removed	42 inch steel pipe through levee (this pipeline removed as part of 2009 setback levee)	No Rehabilitation Required										pre-1955		part of orig O&M 1955				no	no	
	4.25		6						levee removed	42 kv power line crossing of levee (this portion of levee removed in 2009 as part of Setback Levee)	No Rehabilitation Required										2502	yes, cond 4	1957	Pacific Gas & Electric	One Tower, Spear Tower, San Francisco, CA 94105	no	no		
	4.18		6						levee removed	42 kv power line crossing including 9 power poles and 3 anchors (appears to cover permit 2502 and 5072)	No Rehabilitation Required										10552	yes, cond 13	1975	Pacific Gas & Electric	One Tower, Spear Tower, San Francisco, CA 94105	no	no		
	4.15		6						levee removed	Abandon 14 inch pipe (this pipeline removed as part of 2009 setback levee project). Listed as 10" Steel in original 1955 O&M manual.	No Rehabilitation Required	IR(P)	4.1									pre-1955		part of orig O&M 1955				no	no
137	3.8 - 4.0		6	508+00						To clear, level, and plant a peach orchard on approximately 170 acres on the right bank of the Feather River.	No Rehabilitation Required	Trees									13033	yes, cond 31	1980	Mark Teesdale	Route 2, Box 2518, Oroville, CA 95965	no	no		
138	3.75 - 4.50		6							3,400 lineal feet of setback levee and removal of 4,500 lineal feet of existing levee	No Rehabilitation Required										18191	yes, cond 31	2009	Levee District No. 1	243 Second Street, Yuba City, CA 95991	no	no		
	3.76	A	5/6	478+68						Reach 5/6 Transition																			
139	3.70		5	475+00					Not Verified	To plant walnut orchard in the right overflow area of the Feather River downstream from Star Bend	456+00 to 478+68 Cutoff Wall and 200 foot Seepage Berm	Trees									6641	yes, cond 5	1969	Leo Gildersleeve	8104 Garden Highway, Yuba City, CA 95991	no	no		
	3.44	A	5	461+00						Urban (200 year) North - Nonurban (100 year) South Transition																			
140	3.42	A	5	460+11	2,125,845.57	6,676,268.36	38°59'55.716"N	121°35'48.216"W	Abandon 8" steel drainpipe	456+00 to 478+68 Cutoff Wall and 200 foot Seepage Berm	Not sure if the abandonment meets title 23 requirements. Pipe may need to be properly abandoned or completely removed.	IR(A)	4.1			68.10	60.79	64.06	68.37	63.77	pre-1955		part of orig O&M 1955				yes	yes	



LEVEE ENCROACHMENT LIST

APPENDIX A

Levee Mile	SBFCA Phase	SBFCA Reach	SBFCA STA	Location (NAD 83)		Location (WGS 84)		Encroachment	Proposed Levee Improvement	Required Improvement Work	Type	cover	Elevations (NGVD 1988)			Water Surface Elevation (NGVD 1988)				CVFPB Permit Information			Owner Information		verified	Picture Taken	
				Northing	Easting	Latitude	Longitude						Invert of Pipe	Top of Pipe	Top of Levee	100 Yr	200 Yr	500 Yr	DWR 1957	Permit No.	Require Permittee to Relocate	Year	Name	Address			
141	3.09	A	5	442+80	2,124,212.69	6676803.8		Abandon 8" steel drainpipe	456+00 to 478+68 Cutoff Wall and 200 foot Seepage Berm	Not sure if the abandonment meets title 23 requirements. Pipe may need to be properly abandoned or completely removed.	IR(A)	4.1				60.24	63.47	67.69	63.12	pre-1955		part of orig O&M 1955			yes	yes	
142	2.95	A	5	433+50	2,123,304.56	6,677,004.67	38°59'30.780"N 121°35'39.072"W	Power line across levee to service pole with meter on waterside slope of levee	410+67 to 478+68 Cutoff Wall		EL													yes	yes		
143	2.60	A	5	417+66	Not Verified			Abandon Existing 24 inch pipe through levee. The permit was revised to removal of 24 inch via 4666A so there should not be any pipe.	410+67 to 478+68 Cutoff Wall		SD(G)									pre-1955 (install) and 4666 (remove)	yes, cond 5	part of orig O&M 1955 and 1964	Levee District No. 1	243 Second Street, Yuba City, CA 95991	no	no	
	2.49	A	4/5	410+67				Reach 4/5 Transition																			
144	2.47	A	4	410+53	2,121,173.09	66,776,661.21	38°59'09.036"N 121°35'31.038"W	Power line crossing to Feather Water District Pumps	Cutoff Wall		EL	OH									4464	yes, cond 5	1963	Pacific Gas & Electric	One Tower, Spear Tower, San Francisco, CA 94105	yes	yes
145	2.47	A	4	409+84	2,121,105.29	6,677,660.77	38°59'09.036"N 121°35'31.038"W	To install a 2 inch electrical conduit through the levee. The conduit will be buried in the levee slopes and through the crown with one foot of cover. The conduit will provide electrical service to an existing pumping plant in the floodway of the Feather River.	Cutoff Wall	Not sure if the conduit meets the elevation requirement over 200 year WSEL. The type of conduit may or may not meet Title 23. Need to pothole to verify.	EL	2.0			66.20	59.08	62.19	66.19	62.09	7322	yes, cond 5	1971	Feather Water District	280 Wilkie Avenue, Yuba City, CA 95991	yes	yes	
146	2.47	A	4	409+66	2,121,086.77	6,677,660.88	38°59'08.25"N 121°35'30.876"W	Feather Water District South Pump Station 1-18" irrigation discharge pipes. The improvements include a reservoir at the landside toe of levee and an inlet channel from river to waterside toe.	Cutoff Wall	Pipeline meets the elevation requirement over 200 year WSEL. The type of pipe may or may not meet Title 23. Need to pothole to verify.	IR(P)	0.8	64.10	65.60	66.40	59.08	62.18	66.18	62.08	5313	yes, cond 5	1966	Feather Water District	280 Wilkie Avenue, Yuba City, CA 95991	yes	yes	
147	2.47	A	4	409+62	2,121,082.47	6,677,660.77	38°59'08.789"N 121°35'30.876"W	Feather Water District South Pump Station 1-18" irrigation discharge pipes. The improvements include a reservoir at the landside toe of levee and an inlet channel from river to waterside toe.	Cutoff Wall	Pipeline meets the elevation requirement over 200 year WSEL. The type of pipe may or may not meet Title 23. Need to pothole to verify.	IR(P)	0.9	64.05	65.55	66.40	59.08	62.18	66.18	62.08	4228	yes, cond 5	1963	Feather Water District	280 Wilkie Avenue, Yuba City, CA 95991	yes	yes	
148	2.47	A	4	409+58	2,121,078.48	6,677,660.82	38°59'08.748"N 121°35'30.872"W	Feather Water District South Pump Station 1-18" irrigation discharge pipes. The improvements include a reservoir at the landside toe of levee and an inlet channel from river to waterside toe.	Cutoff Wall	Pipeline meets the elevation requirement over 200 year WSEL. The type of pipe may or may not meet Title 23. Need to pothole to verify.	IR(P)	0.8	64.10	65.60	66.40	59.08	62.18	66.18	62.08	4228	yes, cond 5	1963	Feather Water District	280 Wilkie Avenue, Yuba City, CA 95991	yes	yes	
149	2.41	A	4	409+55	2,121,075.08	6,677,660.80	38°59'08.668"N 121°35'30.885"W	Taylor Brothers Farm Irrigation Pump Station. A inclined pump located on the waterside slope of levee with 14 Inch Pipeline through levee	Cutoff Wall	Pipeline meets the elevation requirement over 200 year WSEL. The type of pipe may or may not meet Title 23. Need to pothole to verify.	IR(P)	1.4	63.83	65.00	66.40	59.07	62.17	66.17	62.08	4568A	yes, cond 5	1965	George E. Taylor	182 Wilkie Avenue, Yuba City, CA 95991	yes	yes	
150	2.47	A	4	409+50	2,121,069.88	6,677,660.77	38°59'08.721"N 121°35'30.870"W	Feather Water District South Pump Station 1-18" irrigation discharge pipes. The improvements include a reservoir at the landside toe of levee and an inlet channel from river to waterside toe.	Cutoff Wall	Pipeline meets the elevation requirement over 200 year WSEL. The type of pipe may or may not meet Title 23. Need to pothole to verify.	IR(P)	1.7	63.25	64.75	66.40	59.08	62.18	66.18	62.08	4228	yes, cond 5	1963	Feather Water District	182 Wilkie Avenue, Yuba City, CA 95991	yes	yes	
151	2.40	A	4	407+72	2,120,892.86	6,677,656.42	38°59'08.668"N 121°35'30.885"W	Abandoned pipe and structure at landside toe, pipe is 8 inch, but the headwall appears that it is ran through a larger older pipe possibly and old drainage pipe	Cutoff Wall	Not sure if the abandonment meets title 23 requirements. Pipe may need to be properly abandoned or completely removed.	IR(A)	21.8	43.87	44.70	66.50	59.00	62.09	66.08	62.01						yes	yes	
152	2.21	A	4	396+32	2,119,752.28	6,677,651.86	38°58'55.692"N 121°35'31.050"W	8 inch pipe crossing. Headwall at land toe, art on land side of crown, and cut pipe near water side toe	Cutoff Wall	Not sure if the pipeline meets the elevation requirement over 200 year WSEL. The type of pipe may or may not meet Title 23. Need to pothole to verify.	IR(A)	4.1	61.74	62.40	66.50	58.59	61.63	65.52	61.54	pre-1955		part of orig O&M 1955			yes	yes	
153	1.84	A	4	386+63	2,118,786.69	6,677,704.40	38°58'46.170"N 121°35'30.504"W	Abandon 8 inch pipe crossing, stand pipe on land toe has been destroyed.	Cutoff Wall	Not sure if the abandonment meets title 23 requirements. Pipe may need to be properly abandoned or completely removed. Could not find pipe.	IR(A)	4.6			66.10	58.29	61.29	65.12	61.07	pre-1955		part of orig O&M 1955			no	no	
154	1.51	A	4	365+00	2,116,703.78	6,678,265.36	38°58'25.482"N 121°35'23.46"W	Abandon 8 inch pipe crossing, stand pipe on land toe has been removed.	Cutoff Wall	Not sure if the abandonment meets title 23 requirements. Pipe may need to be properly abandoned or completely removed. Could not find pipe.	IR(A)	4.8			65.10	57.71	60.66	64.40	59.97	pre-1955		part of orig O&M 1955			yes	yes	
155	1.00	A	4	342+27	2,114,521.83	6,678,856.40	38°57'22.128"N 121°35'08.814"W	Irrigation Production Well (located xx foot west of levee toe)	Cutoff Wall		IR(W)														no	yes	
	0.39	A	3/4	300+66				Reach 3/4 Transition																			
156	0.34	A	3	298+89	2,110,314.83	6,679,535.86	38°57'22.204"N 121°35'07.763"W	Removal of a portion and filling with concrete a portion of an abandoned 36 inch steel pipe through the right bank levee of the Feather River	Cutoff Wall		IR(G)									pre-1955 (install) and 4667	yes, cond 5	part of orig O&M 1955 and 1964	Levee District No. 1	243 Second Street, Yuba City, CA 95991	yes	yes	
157	0.36	A	3	298+67	2,110,292.12	6,679,458.78	38°57'22.218"N 121°35'08.814"W	Garden Highway Mutual Water - Irrigation Production Well (located 30 foot west of levee toe)	Cutoff Wall		IR(W)											2009	Garden Highway Mutual Water Company	12755 Garden Highway, Yuba City, CA 95991	yes	yes	
158	0.35	A	3	298+38	2,110,262.81	6,679,553.51	38°57'21.757"N 121°35'07.763"W	Garden Highway Mutual Water 54 inch Irrigation Pump Station Discharge Pipeline through Levee. The improvements include a inlet channel from the river to the 200 feet from waterside toe of levee and irrigation canal at the toe of the landside of levee.	Cutoff Wall	The pipeline does not meet title 23 requirements and will need a positive shut-off structure installed and gate valve at pump. Pumping up and over levee does not appear to be feasible.	IR(G)	25.1	38.00		63.90	55.88	58.57	61.86	57.78	pre-1955		part of orig O&M 1955	Garden Highway Mutual Water Company	12755 Garden Highway, Yuba City, CA 95991	yes	yes	
	0.00	A	3	280+90				State Maintenance Area 3 / Levee District No. 1 Levees Transition																			
1	4.05	A	3	219+00	Not Verified		Not Verified	12 inch pipe. Appears to be removed by pipe laying on ground adjacent to location	Cutoff Wall	Not sure if the abandonment meets title 23 requirements or elevation requirements. Could not find pipe.	IR(A)		59.2 (USED)		55.23	57.92	61.19	56.15	pre-1955		part of orig O&M 1955				no	no	
	4.01	A	2/3	218+66				Reach 2/3 Transition																			
2	3.84	A	2	209+89	2,101,737.07	6,678,031.40	38°55'57.543"N 121°35'27.300"W	Electrical service crossing for pump	181+00 to 218+66 Cutoff Wall and 100 foot Seepage Berm		EL	OH			62.29										yes	yes	
3	3.83	A	2	209+23	2,101,673.35	6,678,014.21	38°55'56.918"N 121°35'27.543"W	Private Irrigation Pump Station. 14 inch welded steel pipe crossing	181+00 to 218+66 Cutoff Wall and 100 foot Seepage Berm	Pipeline meets the elevation requirement over 200 year WSEL. The type of pipe may or may not meet Title 23. Need to pothole to verify.	IR(P)	3.0	59.37 est	60.20	62.90	55.17	57.86	61.13	56.00	1730	yes, cond 3	1952	Robert Crandall	Bogue Road, Route 1, Yuba City, CA 95991	yes	yes	
4	3.70 - 4.25	A	2	217+00				National Audubon Society. To plant approximately 4,000 native trees on 40 acres within the right bank overflow area of the Feather River	181+00 to 218+66 Cutoff Wall and 100 foot Seepage Berm		Trees									17012	yes, cond 17	2000	National Audubon Society	555 Audubon Place, Sacramento, CA 95825			
5	2.9 - 5.19	A	2	217+00				National Audubon Society. To plant approximately 300 to 500 native trees (primarily cottonwoods) on the right bank overflow area of the Feather River	181+00 to 218+66 Cutoff Wall and 100 foot Seepage Berm		Trees									16817	yes, cond 21	1998	National Audubon Society	555 Audubon Place, Sacramento, CA 95825			
6	3.18	A	2	174+91	Not Verified		Not Verified	12 inch pipe	129+66 to 181+00 Stability Berm and 100 foot Seepage Berm	Not sure if the abandonment meets title 23 requirements or elevation requirements. Could not find pipe.		4.5			54.73	57.40	60.61	55.57						no	no		
	0.00	A	1/2	129+66				Reach 1/2 Transition																			
7	2.19 - 3.00	A	1	125+00				To level 60 hectares of leered land westward of the right bank of the Feather River upstream of the SR 99 Bridge	Cutoff Wall		Struc									8638, 13343, 12590	yes, cond. 13	1982	Nevis Land Co. now owned by DFG	1416 9th Street, Sacramento, CA 95814	yes	yes	
8	2.19	A	1	124+32	2,094,124.90	6,679,433.55	38°54'42.235"N 121°35'09.990"W	Hamatani Ranch - Sacramento Avenue Irrigation Pump Station and pipeline crossing	Cutoff Wall	The pipeline does not meet title 23 requirements and will need a positive shut-off structure installed and gate valve at pump. Pumping up and over levee does not appear to be feasible. Should be part of 30 percent design.	IR(P)		32.01		60.39	53.53	56.08	59.07	53.55	3284	yes, cond 4	1960	T.H. Richards now owned by Odysseus Farms PTN	P.O. Box H, Yuba City, CA 95992	yes	yes	
9	2.19	A	1	124+32	2,094,124.90	6,679,433.55	38°54'42.235"N 121°35'09.990"W	24 inch culvert pipe. Part of Sacramento Avenue Irrigation Pump Station	Cutoff Wall	The pipeline does not meet title 23 requirements and will need a positive shut-off structure installed and gate valve at pump. Pumping up and over levee does not appear to be feasible. Should be part of 30 percent design.	IR(P)	26.0	32.01		60.39	53.53	56.08	59.07	53.55	pre-1955		part of orig O&M 1955	T.H. Richards now owned by Odysseus Farms PTN	P.O. Box H, Yuba City, CA 95992	yes	yes	
10	2.10	A	1	124+21	2,094,115.32	6,679,426.80	38°54'42.141"N 121°35'10.076"W	12 kv overhead electrical crossing	Cutoff Wall		EL	OH			60.31										yes	yes	
11	1.85	A	1	107+21	2,092,674.99	6,678,527.08	38°54'27.944"N 121°35'21.542"W	Remaining abutment for old Nicolaus Bridge	Cutoff Wall		Bridge				60.80										yes	yes	



LEVEE ENCROACHMENT LIST

APPENDIX A

Levee Mile	SBFCA Phase	SBFCA Reach	SBFCA STA	Location (NAD 83)		Location (WGS 84)		Encroachment	Proposed Levee Improvement	Required Improvement Work	Type	cover	Elevations (NGVD 1988)			Water Surface Elevation (NGVD 1988)				CVFPB Permit Information			Owner Information		verified	Picture Taken
				Northing	Easting	Latitude	Longitude						Invert of Pipe	Top of Pipe	Top of Levee	100 Yr	200 Yr	500 Yr	DWR 1957	Permit No.	Require Permittee to Relocate	Year	Name	Address		
12	A	1	105+00			Not Verified		To construct three 1 acre ponds on the right bank overflow area of the feather River	Cutoff Wall		Struc								16738	no	1997	Department of Fish and Game	1701 Nimbus Road, Suite A, Rancho Cordova, CA 95670			
13	A	1	99+00					Hamatani Ranch Irrigation Canal - Station 99+00 to 107+00	Cutoff Wall		IR(G)											T.H. Richards now owned by Odysseus Farms PTN	P.O. Box H, Yuba City, CA 95992	no	no	
14	1.60	A	1	98+00	2,092,080.61	6,677,794.38	38°54'22.101"N	121°35'30.845"W	State Route 99 Crossing of Levee -To install two removable barriers on the roadway shoulders at the SR 99 crossing of the right bank of levee crown of the Feather River.	Cutoff Wall	Bridge			62.03					14286	no	1986	Caltrans	703 B Street, Marysville, CA 95901	yes	yes	
15	1.60	A	1	97+61	2,092,071.07	6,677,788.96	38°54'22.007"N	121°35'30.914"W	U.S. Communication cable	Cutoff Wall	TL	3.0		61.04					3511					yes	yes	
16	1.2-2.7	A	1	74+00			Not Verified		To install two sections of 12KV three phase power lines, approximately 2.3 kilometers in combined length, to provide service for irrigation pumps. The project is located in the overflow area at the right bank levee of the Feather River running north and south of the Garden Highway crossing and over the Nelson Slough levee.	Cutoff Wall	EL	OH							13409	yes, cond 13	1982	Pacific Gas & Electric	5555 Florin-Perkins Road, Sacramento, CA 95826	no	no	
17	1.20	A	1	73+39	2,090,564.35	6,675,895.46	38°54'07.197"N	121°35'54.953"W	12 kv overhead electrical crossing	Cutoff Wall	EL	OH		56.04					2483	yes, cond 4	1957	Pacific Gas & Electric	One Tower, Spear Tower, San Francisco, CA 94105	yes	yes	
18	1.20	A	1	72+27	2,090,511.86	6,675,799.08	38°54'06.682"N	121°35'56.176"W	Transmission Line Crossing - East Line	Cutoff Wall	EL	OH		55.83							2008	WPA	114 Parkshore Drive, Folsom, CA 95630-4710	yes	yes	
19	1.20	A	1	71+89	2,090,504.83	6,675,762.31	38°54'06.614"N	121°35'56.641"W	Transmission Line Crossing - West Line	Cutoff Wall	EL	OH		55.64							2009	WPA	114 Parkshore Drive, Folsom, CA 95630-4710	yes	yes	
20	0.80	A	1	52+25	2,091,015.74	6,673,876.41	38°54'11.746"N	121°36'20.470"W	Hamatani Ranch Storm Drainage Pump Station. The pump discharge is a 20 inch pipe and pump is Bryon Jackson 17H0H with 50 HP electrical motor.	Cutoff Wall	SD(P)	3.0	49.35 rd	51.02 rd	56.34	50.43	52.76	55.28	48.84	13624	yes, cond. 13	1983	Danna & Danna Inc. now owned by Odysseus Farms PTN	P.O. Box H, Yuba City, CA 95992	yes	yes
21	0.80	A	1	52+25	2,091,015.74	6,673,876.41	38°54'11.746"N	121°36'20.470"W	2-18 inch steel pipes with concrete "U" headwall at waterside toe.	Cutoff Wall	SD(G)	32.0	24.0 (USED)							pre-1955		part of orig O&M 1955	Danna & Danna Inc. now owned by Odysseus Farms PTN	P.O. Box H, Yuba City, CA 95992	yes	yes
22	0.00	A	1	10+82	2,088,598.75	6,670,597.31	38°53'47.993"N	121°37'02.081"W	To install canal gates on two existing 48 inch CMP culverts under a spur levee on the right bank overflow area of the Feather River	Cutoff Wall	IR(G)	32.0		54.48					13506	yes, cond. 13	1982	Nevis Land Co. now owned by DFG	1416 9th Street, Sacramento, CA 95814	yes	yes	
23	0.00	A	1	10+60					Hamatani Ranch Storm Drainage Ditch - Station 10+60 to 68+25	Cutoff Wall	IR(G)	32.0		54.48					13506		1982	Nevis Land Co. now owned by DFG	1416 9th Street, Sacramento, CA 95814	yes	yes	
	0.00	A	1	10+00					Begin Reach 1																	

- Part of TO 6 Contract
- Part of TO 5 Contract
- Part of TO 4 Contract
- Encroachment but not part of MHM work - Redline HDR or WR Plans

- SD(G) Storm Water - Gravity
- SD(P) Storm Water - Pressure
- WW(G) Waste Water - Gravity
- WW(P) Waste Water - Pressure
- IR(G) Irrigation Line - Gravity
- IR(P) Irrigation Line - Pressure
- RW (P) Raw Water - Pressure
- W(P) Water Line - Pressure
- RD Roadway Crossing
- GL Gas Line
- TL Telephone
- EL Electric Line
- SEEP Seepage

